

Integration Note

Manufacturer:	Fusion Research
Model Number(s):	Ovation Summit OS Solo & Duet, some OMS(x)
Core Module Version:	
Driver Developer:	Fusion Research, Inc.
Document Revision Date:	2020-02-27

NOTE: We've been doing a lot of minor updates to the driver as both ELAN changes their API to give us more flexibility and dealer feedback has suggested features/improvements. Please check to make sure you have the most recent driver and integration notes.

Overview & Supported Features

Fusion Music Servers featuring Summit OS (first released August 2016), some older music servers may have been upgraded to the Summit platform. This includes moving away from MySqueezebox.com which is no longer required.

These servers allow streaming of both local content and streaming internet services and radio.

There are several available music sources for an Ovation music server including:

- Client's digital music collection (many file formats supported including Apple (AAC & ALAC), MP3, OGG Vorbis, WMA, FLAC and others.
 - The digital music collection may be accessed over the local network from an SMB share.
 - Summit features an iTunes synchronization and backup utility that is placed on the computer hosting the iTunes account and automatically synchronizes both music and playlists to an attached USB hard drive (not included). PC and MAC OS versions of the iTunes helper utility can be downloaded free at the manufacturer website here:
<https://www.fusionrd.com/ovation-music-server-support>
- Internet radio sources are currently available from TuneIn & iHeartRadio.
- Streaming services such as Pandora, Spotify, SoundMachine and others are also available.
 - **Note:** most services require a paid or premium account. Please see www.fusionrd.com for the latest list of supported services. Fusion is not responsible for the loss of certain streaming services that are beyond their control.
- AirPlay is also an input option on each Fusion music source.

The g! system is capable of communicating with the Fusion Music Server to navigate, control and see what is playing on each player over a standard network connection, providing full 2-way feedback and control.

The following options are supported:

- Play digital audio from local or streaming internet sources through the Ovation Server and its internal audio outputs.

- **Note:** Each audio output will appear as its own Player.
- Play and index digital music stored via attached HDD or on a network drive, also including most iTunes libraries.
- Browse local music library by Artist, Album, Genre, Tracks or Playlists.
- Stream Internet Radio.
- Now Playing and Play Queue information including metadata and album art (as available) is presented in the viewer.
 - Note that availability and level of detail of metadata will vary when using Internet Radio and streaming services.
- Unlimited Server/Player combinations.
- This driver can control the Fusion Ovation Server from all thin client interfaces (PC, ELAN Touchscreen, Android, iOS), TS2 and HR2.
- Custom top level menu (custom home on the Fusion Configuration Utility) supports the editing of what options are visible on ELAN devices.
- Limited integration with ELAN favorite mechanism. See notes below.

The following options are not supported:

- The Fusion Ovation Server is controlled almost entirely through dynamic data and is not available for translation through the Internationalization feature.
- DRM Protected music formats are not supported.
- Any special features or third-party plugins not specifically mentioned as supported in this document should be considered unsupported unless verified by Fusion themselves
- Clearing the entire music queue
- Auto-removal of child drivers
- Auto-addition of child drivers

Any feature not specifically noted as supported should be assumed to be unsupported.

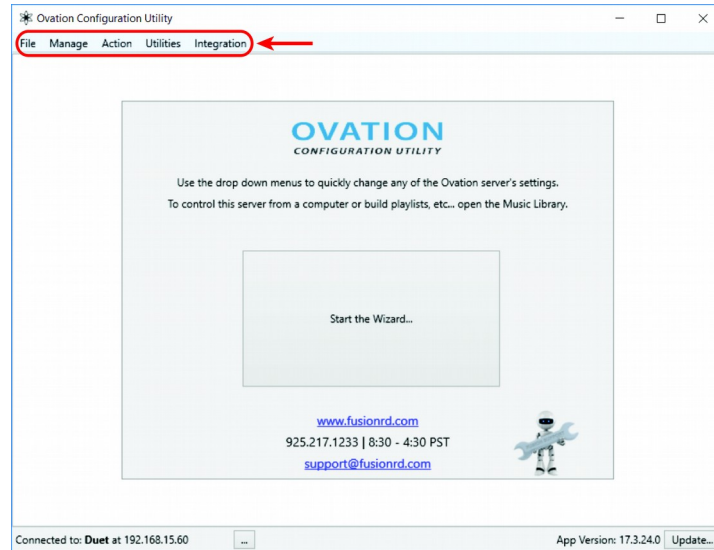
Fusion Music Server Configuration

All Fusion Music Servers are tested prior to shipping. An internet connection, a computer and Fusion's latest configuration utility downloaded from their website are all required. If iTunes accounts are to be synchronized and backed up, an optional USB hard drive should be added to the server.

1. Download the latest configuration utility from Fusion's website: <https://www.fusionrd.com/ovation-music-server-support>. This will include any updates to the Fusion product including new features and services that might be available.
2. Once you have placed, powered and connected the server in its intended location, please ensure that it is connected to the same network as the computer that you will using as the configuration tool. You may then open the Fusion Ovation Configuration Utility.
3. If initially configuring the music server, the configuration utility will search for any updates, it will prompt you to apply those to the device. This may require the music server to reboot. If that happens it will attempt to automatically reconnect within 120 seconds. If it does not reconnect after that time, please restart the configuration utility and it will, again, automatically find the Ovation server.
4. From that point, you may start the wizard and it will walk you through a step-by-step setup of the server, including: setting a static or dynamic IP (static required for ELAN control), the naming of each player

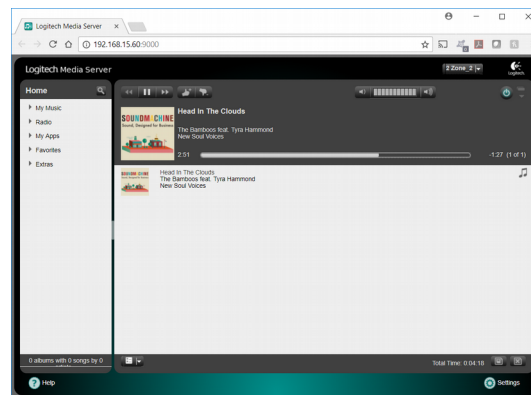
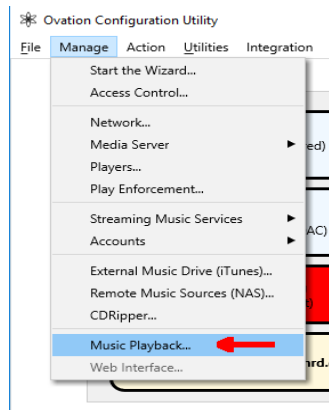
available on the server, setup of each streaming service required, iTunes integration (or other client-owned digital media).

- **Note:** All of these steps can be accomplished manually from the drop down menu without the use of the wizard as well (see graphic).



5. That should complete your initial setup, for more details please download the full product manual at the music server support page at www.fusionrd.com.

- **Recommended:** It is recommended that you test playback before you connect it to the ELAN system. To do this, click on the [Manage] tab and select [Music Playback] this will open a window that you can use to select and control a player. Double-click a player to select something to play.



Driver Configuration

Adding the **Fusion Ovation Server** driver to the Configurator gives you the ability to then add any attached players connected to the Fusion server to your Media Sources at the click of a button. These Sources can then be tied to any defined Zones in your ELAN project.

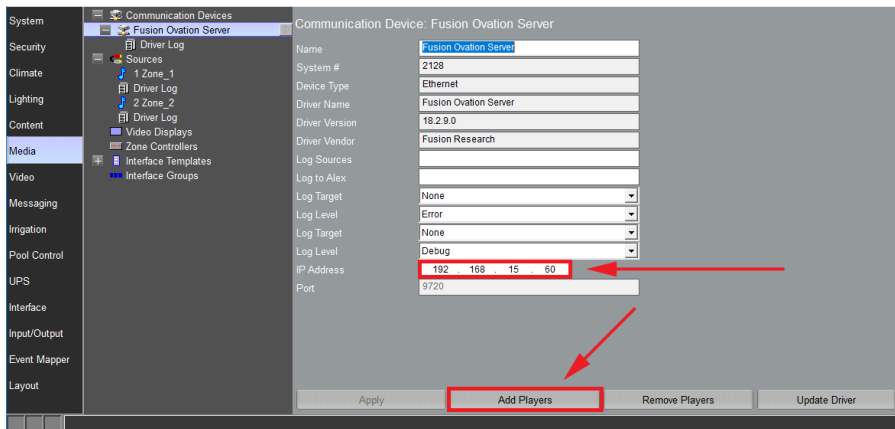
The latest version of the **Fusion Ovation Server** driver can be found here:

<http://www.elanhomesystems.com/dealer-resources/drivers>

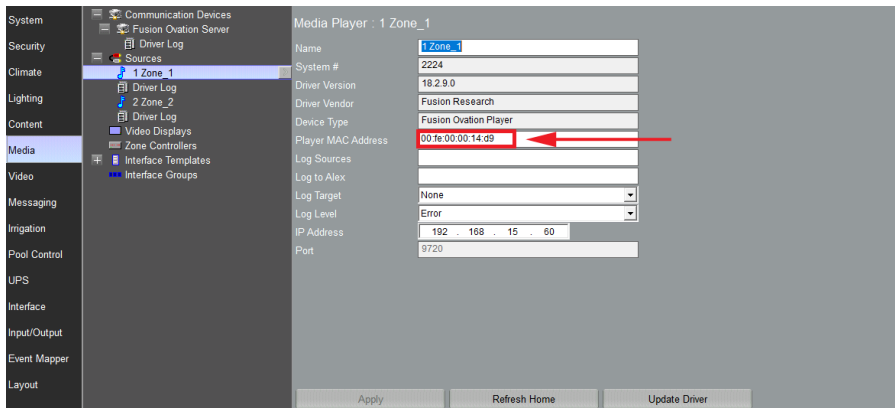
Installation Process

It is recommended that you follow the below installation process in order to ensure you are running the latest version of the [driver].

1. Add the Fusion Ovation Server (MCI) Driver to the system under Media Communication Devices. Set the IP address of the Ovation (previously configured using the Fusion Configuration Utility) and Apply the setting. Then click the “Add Players” button. This will add one Fusion Ovation Player driver for each server output under Sources.

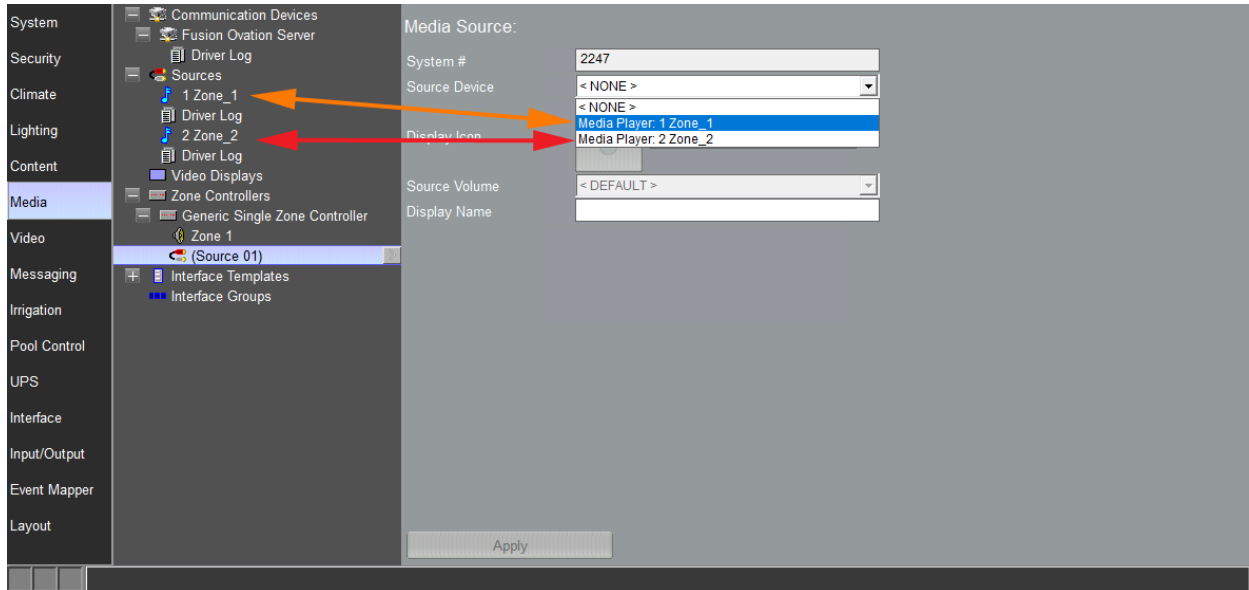


2. Check each Fusion Ovation Player driver in the Sources. Each one should have the server’s IP address as well as a unique Player MAC Address and Name. You can change the Name but should not change the MAC address as this is what determines which player the driver is controlling.



3. If necessary you can use the Refresh Home button to instigate an update of the top level music menu in the driver. This should happen automatically periodically anyway, but it could take up to a minute and can be forced with the driver button.
4. Connect each Source you want to interact with to a Zone for user interface control.

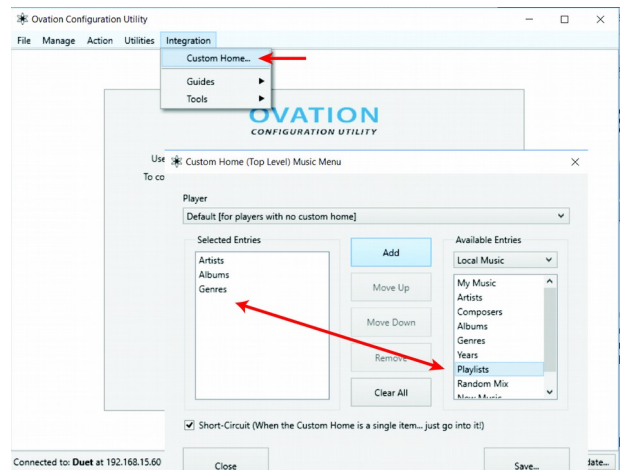
The dropdown box for the Source Device will let you select one of the Sources that you added in Step 1.



In this very simple example, you should have added one Server driver under the Communication Devices and one or more Player drivers under Sources. Each of the Player drivers should be connected to as a source inside your zone. Don't forget to hit Apply for these changes to take effect.

Customizing Your GUI:

- As a final step, we recommend you utilize the **“Custom Home”** feature in the configuration utility. This allows you to edit what is visible in the ELAN GUI. This must be done **AFTER** you install the ELAN driver
 - For an example, you can choose to simplify what a client sees when they navigate their own music in an ELAN GUI. In the graphic below, we would be choosing just [Artists, Albums, Genres & Playlists] or just show Spotify instead of 'My Services' & 'My Apps'.



Ongoing Driver Usage:

When updating the driver, first update the server driver under Communication Devices, then update one player driver under Sources. After doing so, check all players and the server are the same (new) version number.

Deleting Players:

Deleting the server driver will not delete player drivers. You can either use the “Delete Players” button on the server driver before removing it, or simply delete each player driver individually.

CONFIGURATION DETAILS

The following table provides settings used in Configurator ...Please refer to the Configurator Reference Guide for more details.

In the table below:

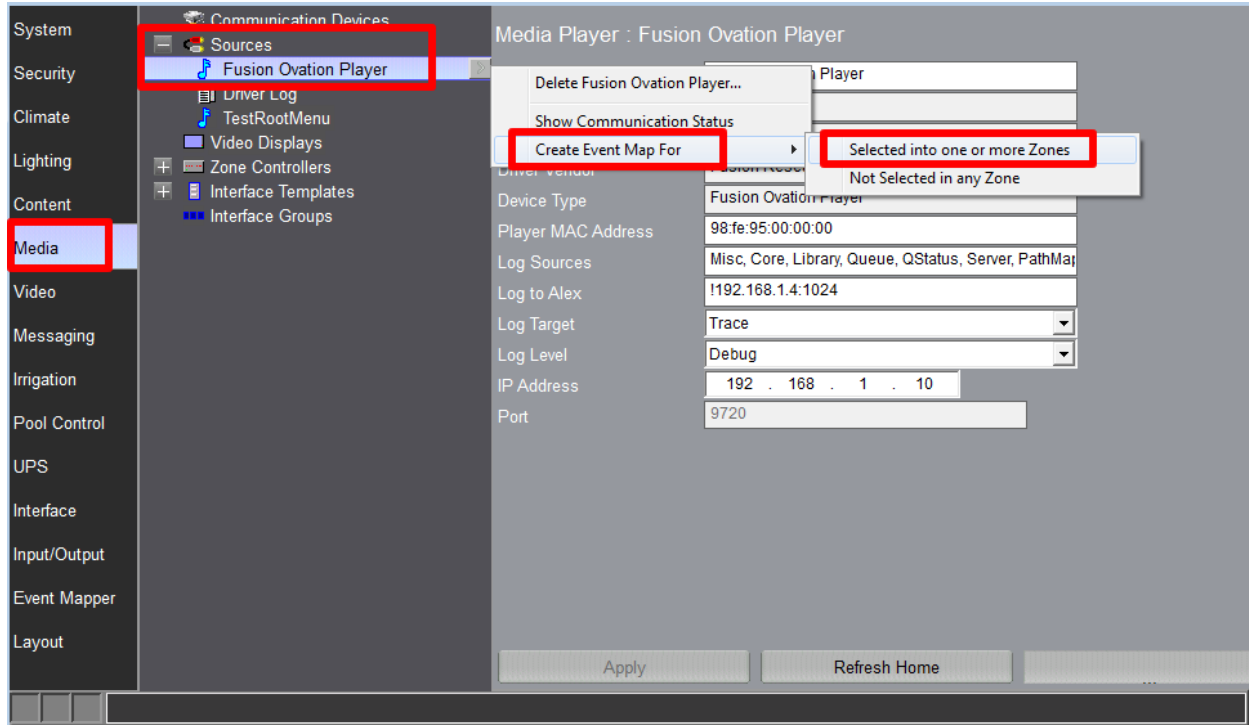
- Player MAC Address Identify the Ovation Player being controlled by the driver.
- Log Target Specifies where logging is directed.
- Log Source/Level Specifies what messages are recorded for which sub-components.
- Log to Alex For use by Fusion support for real-time remote logging.

Devices	Variable Name	Setting	Comments
Communications Devices	Name	<User Defined> (Default: New Device)	
	Type	Ethernet	
	IP Address	<User Defined>	After setting, click Add Players to add Media Player Sources
	Port	9720	
Media Players	Name	<User Defined> (Default: <i>Player Name</i>)	
	Player MAC Address	<User Defined> (Default: <i>Player MAC Address</i>)	
	IP Address	<User Defined> (Default: <i>Server IP Address</i>)	
	Port	9720	

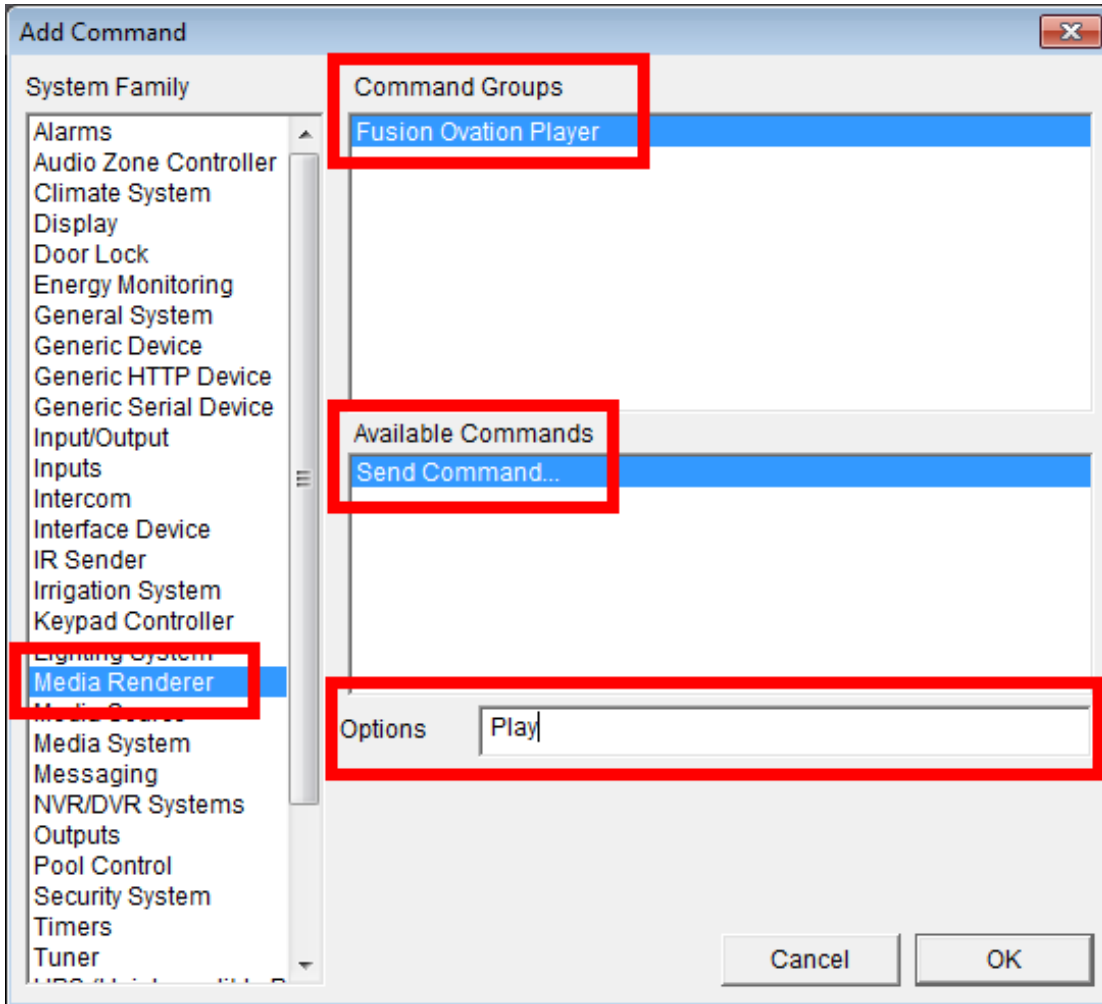
USER COMMANDS

THE DRIVER CAN ACCEPT “USER COMMANDS” WHICH CAN BE INVOKED BY THE EVENT MAPPER’S SEND COMMAND OPERATIONS.

TO SEND A COMMAND, RIGHT-CLICK ON THE DRIVER AND CREATE AN EVENT MAP (SELECTED INTO ONE OR MORE ZONES) AND ADD A COMMAND.



SELECT THE "MEDIA RENDERER" SYSTEM FAMILY AND THE APPROPRIATE DRIVER FROM THE COMMAND GROUPS. THEN CHOOSE "SEND COMMAND...". THE ACTUAL COMMAND IS ENTERED AS THE "OPTIONS".



THE FOLLOWING COMMANDS ARE SUPPORTED:

Command	Operation
ClearQueue	Clear the playback queue and stop playback.
Play	Start playback (play)
Pause	Pause playback (discrete)
PauseToggle	Pause/Unpause playback (toggle the pause state)
Stop	Stop playback
Previous	Move to the previous item in the queue
Next	Move to the next item in the queue
Repeat None	Set repeat mode to None (no repeating)
Repeat Song	Set repeat mode to Song (repeat the current song)
Repeat Playlist	Set repeat mode to Playlist (repeat everything in the playlist)
Repeat Next	Move repeat mode to the next (cycles through None/Song/Playlist)
Shuffle None	Set shuffle mode to None (no shuffling queue entries)
Shuffle Song	Set shuffle mode to Song (Shuffle all songs in queue)
Shuffle Album	Set shuffle mode to Album (Shuffle songs within albums)
Shuffle Next	Move shuffle mode to the next (cycles through None/Song/Album)
PlayFavorite [###]	Play a favorite. [###] must be replaced with a legitimate favorite. If it's a single number like 0, 1, 2, 3 it will play the favorite by the position (zero based) in the list of favorites. If the entry is a dotted number set (i.e. 0.2.1) each dot represents descending a folder (for playing favorites within folders). Examples: PlayFavorite 0 PlayFavorite 1 PlayFavorite 2 PlayFavorite 0.0
PERFORM [api string]	Perform an API action by passing the [api string] directly to the player. For example, the command to play favorite 1: PERFORM action=play&path=/favorite=1

ADDITIONAL COMMANDS EXIST, BUT ARE NOT DOCUMENTED HERE DUE TO THEIR HIGHLY IMPLEMENTATION DEPENDENT NATURE. IF YOU REQUIRE FUNCTIONALITY NOT AVAILABLE THROUGH THE COMMANDS ABOVE, PLEASE CONTACT US FOR ASSISTANCE.

ABOUT FAVORITES

This only applies to actions taken through the ELAN user interface.

When browsing the library, any item that is favorited will be favorited in both the music server itself (which is previous behavior) and in the ELAN favorite system (which is new).

When removing a favorite it will be removed from both the music server's favorite list and the ELAN system.

When favoriting a currently playing thing, this is only done in the ELAN system and only the last thing "loaded" into the music queue will be favorited. This means if the user plays an album and then adds a single track to the queue, what will be favorited is the album, not the queue.

COMMON MISTAKES

1. Forgetting to add Player Drivers as Sources after adding the Server
2. Not configuring the Server driver's IP address before "adding Players"
3. Not connecting a Player (source) driver to a Zone
4. Not using a premium or paid account for various sources (Pandora & Spotify, for example), Fusion servers **do not** support free or Facebook accounts.
5. Not using the "Remove Players" button to remove players before deleting the server driver.
6. Not updating the player driver after updating the server driver.

ELAN DEVELOPER PARTNER INFORMATION

This ELAN driver was written and supported by:

Fusion Research, Inc.

<http://www.fusionrd.com>

(925) 217-1233 (8:30 am – 4:30 pm PST)