



FUSION RESEARCH

EPIC Movie Servers

Installation Guide

October 2016

TABLE OF CONTENTS

Chapter 1: <i>Before you get started... the basics</i>	4
Chapter 2: <i>Setting up your EPIC Movie Server</i>	7
Chapter 3: <i>Loading movies on a Fusion server</i>	17
Chapter 4: <i>Navigating your Fusion system</i>	23
Chapter 5: <i>Managing you movie collection</i>	35
Chapter 6: <i>Adding additional zone players</i>	42
Chapter 7: <i>Adding additional storage capacity</i>	43
Chapter 8: <i>Warranty and repair information</i>	44

THE BASICS:

Fusion's EPIC Movie Servers are as easy to install and use as a standard DVD player. There are, however, a few ways to hook it up, depending on the components you have in your entertainment system.

The EPIC movie servers are an HDMI based product, which means that the HDMI cable outputs both video and audio together, with up to 1080p stunning resolution and HD surround sound. We'll cover the following:

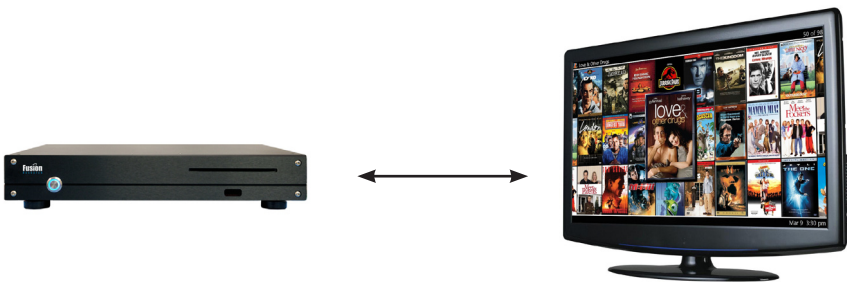
- Fusion's HDMI requires two-way communication
- Test your HDMI handshaking for errors
- Setting up component for your system (*if necessary*)

Tech Tip: If you are connecting the Fusion Media Server through any kind of Matrix Switch, the common default EDID is Auto or 2 Channel of audio. This means that you will need to adjust the Fusion Audio settings to 2 Channel or refer to the matrix switch manufacturers manual/technical support on how to manually set an EDID in order for the device to properly function

CONNECTING HDMI DIRECTLY TO YOUR TV:

You may connect the HDMI cable directly from your movie server to the TV for both sound & video. Sound will come from the speakers in the TV and the audio output will be two-channel stereo.

Tech Tip: In the Setup Menu, you will want to set the Audio Wizard to output "HDMI - Stereo Output" (*see Chapter 2 for details*) as most televisions cannot down-mix surround sound.

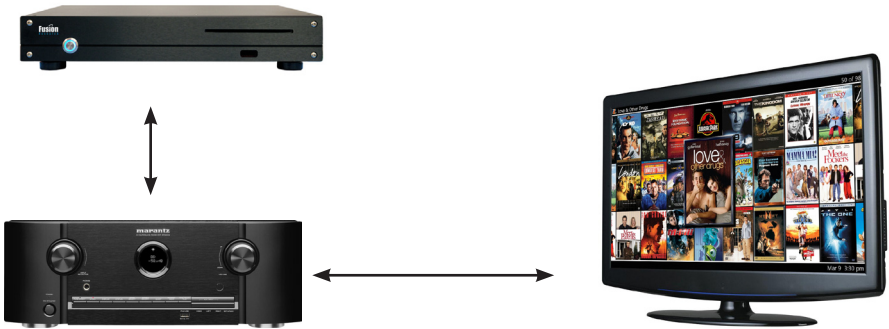


*Encore Movie Server pictured is for demonstration purpose only. Server may vary from pictured unit

CONNECTING HDMI TO A RECEIVER (w/HDMI INPUTS):

You may connect the HDMI cable from your movie server to the receiver for both sound and video. The receiver will take the audio from the HDMI cable and send the video to the TV.

Note: If you are plugging into a receiver that is powering more than 2 speakers (surround sound), you will want to change your audio setting on the movie server to “HDMI - Surround Sound”.



CONNECTING TO A RECEIVER (w/out HDMI INPUTS):

You may connect the HDMI cable directly from the movie server to your television for video. Connect an optical cable (*digital toslink*) directly from the movie server to your receiver for audio.

Note which input you've plugged the optical cable into on the receiver so you can select the appropriate input on the front of the receiver.

Using the same Audio Wizard we spoke of earlier, you must set the audio to “Optical Digital Output”.



HDMI HANDSHAKING:

HDMI is by far the most efficient (*and in many cases the only*) method of transmitting audio and video from one component to another. Unfortunately there are many issues that go along with this performance and convenience. The primary one is losing the “handshake” between two devices.

The first important step is to determine if you even have an HDMI problem. Movie servers are different from simpler devices like DVD players or cable boxes; they require full two-way communication with the display device.

Step one is to run a quick and simple test during your installation. All Fusion systems are designed to run 24/7 and typically are left powered on (*although this is not a requirement*). Every evening, the unit will reset itself at approximately 4AM unless a movie is playing on the unit.

Some receivers or displays do not maintain their EDID output (*or handshake*) when powered off. When this happens the Fusion server will lose its HDMI connection and no longer will have the correct and required EDID for maintaining proper video output. This is very easy to check for and can be remedied if discovered.

TESTING FOR HDMI HANDSHAKING ISSUES:

Turn your receiver and TV off, then power off and restart the Fusion server. After the server has completely restarted (*one full minute*), power on the receiver and TV and check for correct video output. If your equipment maintains its EDID properly the video will be fine. If however, you have a black screen, the resolution is incorrect, or the picture has shifted, you have an HDMI handshaking issue.

These types of problems are common enough that there are a number of manufacturers that make and sell EDID learning devices to fix this problem. Gefen & Atlona both make EDID learning devices which are small adapters that can be used in-line to maintain EDID. Gefen’s HDMI detective is a very popular solution, another simple solution is to use a small HDMI switch which maintains EDID. ***Be sure to remember NEVER to hot swap or plug and unplug HDMI cables when equipment is powered up!***

POWERING UP THE SYSTEM:

Fusion movie servers are a hard drive based server with the ability to store all your DVD and Blu-rays as well as play them back.

When placing the system in your equipment rack or elsewhere, it is important to provide adequate ventilation. All server based products will generate some heat and will require ventilation, failure to provide adequate airflow may result in hard drive damage or other hardware issues.

To power the unit up or down, touch the front power button once and release. ***DO NOT hold the power button down to force the unit to shut-down. Doing so may damage the operating system.***



Tech Tip: Great effort has been made to engineer our servers to be as quiet as possible; however it is important to understand that these devices are both a player and a powerful server. The system will still emit some fan noise, especially under load and thought must be given to the placement of the unit to keep it cool and well ventilated.

CONNECTIONS ON THE FUSION MOVIE SERVER:

To begin setting up your Fusion server you will need to connect the following cables into the device.

Connect the power cable to the server (Fusion servers should always be plugged into a UPS device)

Connect your HDMI cable to your display

Connect your home's internet service (required for importation of movies)

Connect the IR emitter* into any USB slot on the back of the server

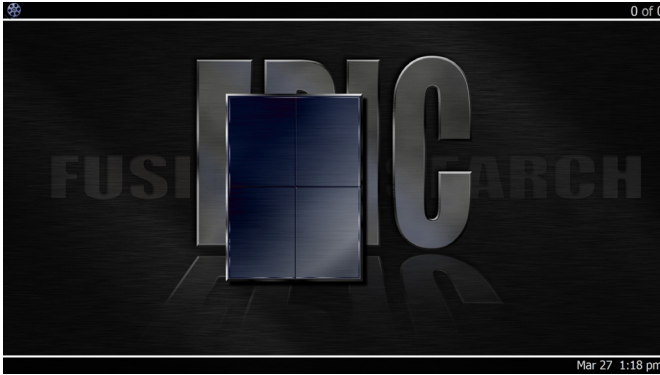
(*IR emitter only ships with Premier and Genesis line models. Encore line includes built in IR emitter)



Tech Tip: It is important to remember that the IR emitter is small in form factor and easily misplaced, please be mindful of this when unboxing and setting up the Fusion Media Server. If you are connecting the Fusion Movie Server with a IP control system and not using IR, you will still want to make sure that the factory IR emitter and remote are not misplaced as these are helpful tools to have when troubleshooting.

INITIAL SETUP:

Once you have all the connections in place, power the system on and you should see the screen below.



NOTE: Servers may have 1 or 2 titles pre-installed as part of the preparation process for shipping

To complete the setup of the system, use the supplied IR remote and hit the **i** button to bring up the [Main Menu] screen. From here you will be able to complete the setup of the system using the remote.



*All further mentionings of [Main Menu] refer to the pressing of the **i** button on the Fusion provided remote.

REMOTE CONTROL FUNCTIONS:

Fusion servers and players ship with supplied generic media center IR remotes. Fusion is not a media center product, we've merely shared the IR codes, making the use of many types of remotes possible.

These remotes can be used for controlling the system, however their main purpose is to help you setup a universal-type IR remote or IP control system. Here are some of the functions available on the remote:

**Please be aware your remote may differ from pictured*



REQUIRED SOFTWARE:

Fusion Movie Servers have been designed to store home movies and unencrypted DVD & Blu-ray movies. Fusion does not condone any other use for this product and suggests owners should respect the copyrights of others.

If you are going to store your own commercially encrypted DVDs or Blu-ray you will first need to purchase a license of AnyDVD HD. Once you have purchased a license you will need to take the registration key they email to you and put it on a USB key. Insert that USB key into an available USB slot on your server.

Once you've done that, bring up the [Main Menu], then select [Setup Menu] and then [Disc]. You will then navigate down to the Manage AnyDVD utility, click [Manage], then [Install].



Once the AnyDVD HD has finished installing, it will automatically reboot the system. When the GUI comes back up you will now be able to remove the USB key and insert a DVD or Blu-ray into the drive and the system will automatically find the movie information and begin the import process.



COMMERCIALLY ENCRYPTED MOVIES:

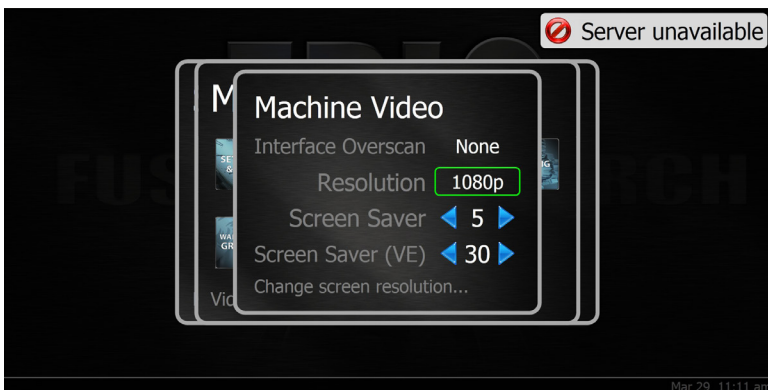
Fusion fully respects the rights of IP and media copyright holders. Fusion does not condone illegal copying or distribution of any copyrighted materials. No Fusion product ships with decryption software that may be used to violate copyright laws.

Any use of Fusion products for any illegal purpose is strictly prohibited. All users of Fusion products should own all content stored on the product including, music and videos. All other content license rules and regulations as defined by the copyright holder shall be adhered to including but not limited to the prohibition of any illegal distribution or copying of any content that has been loaded onto the server.

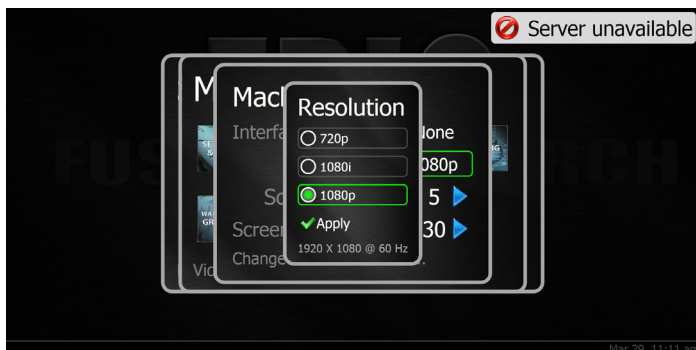
In no event shall Fusion or its resellers be liable for any losses dues to illegal use of this product or any incidental, exemplary, special, or consequential damages regardless of whether Fusion was advised of the possibility of such damages.

VIDEO RESOLUTION SETUP:

When connecting via HDMI, the system may set the correct resolution for the display automatically. If it does not, it's easy to set in the menu. Open the [Main Menu] and then select [Setup]/[Machine]/[Set Up Video].



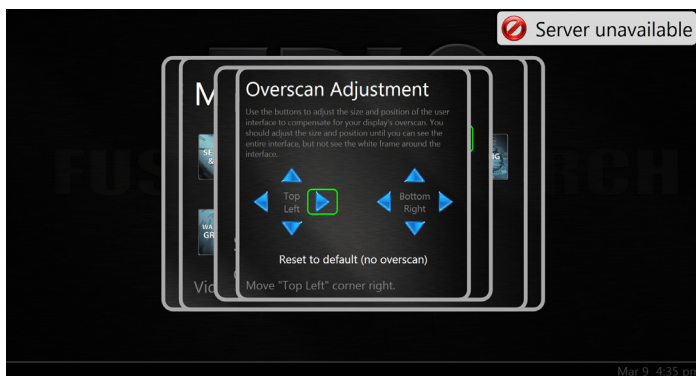
To adjust the resolution, select the resolution option and adjust to the desired setting.



Along with the resolution you can adjust the screen saver timer (*by minute*) or turn it off completely.

FUSION INTERFACE ADJUSTMENTS:

You can also adjust the Graphic User Interface or GUI overscan settings. You'll want to do this when the GUI is larger than the display itself, (*i.e. a Plasma display*).



TechTip: Fusion Movie Servers do something unique by decoupling the GUI (*the movie interface*) from the video playback engine (*the movie itself*). This enables the user to set the GUI separately.

You'd want to use this when setting up a server in a projector system with an anamorphic lens and a 2.35-1 ratio screen. The GUI will be full screen but the movie will still be untouched and ready for an anamorphic lens.



An example of a Fusion GUI stretched for a 2.35:1 screen

VIDEO PLAYBACK ADJUSTMENTS:

It is rare to need to adjust the underscan of the actual video playback engine, but should this be required you will need to navigate to the [Main Menu] and select [Set Up]/[Set Up Video]. Here you will be able to adjust the playback engine similarly to how you adjusted the GUI previously.



While you are in this screen you may also adjust the rows of movie titles you will see on the screen (*default is three*). You can also show or hide the advanced tab that appears on the movie detail screen.

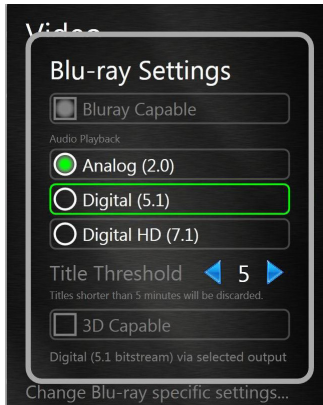
The advanced tab allows the user to update the cover art and meta data of a movie or delete a movie, right from the main detail screen.

AUDIO SETUP:

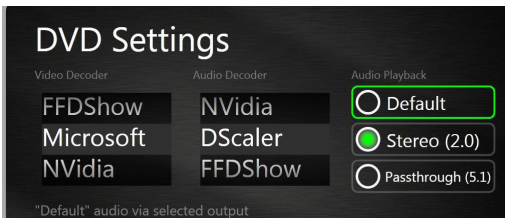
You may set the audio outputs for DVD and Blu-ray playback separately. This can be accomplished by opening the [Main Menu]. From the [Main Menu] select [Setup]/[Video].



Within the [Video] menu will need to adjust the [Blu-ray Setting] and [DVD Setting] to the appropriate audio output.



Blu-ray Settings Menu



DVD Settings Menu

Alternately you can use the [Audio Wizard]* to configure the audio outputs together.

*The [Audio Wizard] is not available on all Fusion Movie Servers and that these models require the audio playback to be configured separately.

To access the [Audio Wizard] you will want to go to the [Main Menu] and then select [Set Up]/[Machine]/[Set Up Audio].



This will open the [Audio Wizard]. You will then simply need to select the appropriate output setting and click apply. All audio settings will be configured.



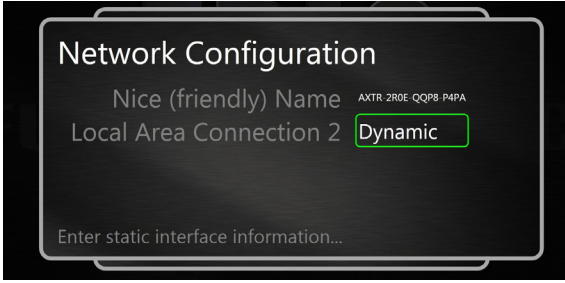
Any audio output changes will take effect immediately, NO REBOOTING is required.

NOTE: All Fusion Media Servers only have one audio source hot at a time. If you require digital surround and analog audio to be hot at the same time you will need to purchase a Zone Player to decode the addition audio stream.

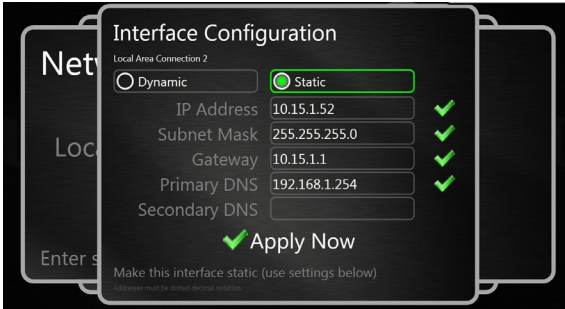
You are not able to run HDMI output and analog output at the same time.

SETTING THE IP ADDRESS:

Fusion Movie Servers ship with a Dynamic IP set. Every time the system is powered on, it will acquire an available IP address. If you are using only one server (*no additional zone players*) and an IR remote to control the server, you may leave it on a Dynamic IP.



If, however, you are installing several Zone Players, using additional NAS storage devices or are controlling the system with an IP-based home automation control system, you will want to set a static IP address. This will ensure that the machines will ALWAYS communicate with each other correctly. You will also want to copy the Gateway and DNS from your router to make sure that our system can contact our database during importation.



TechTip: When setting a static IP, you should always set it outside the normal dynamic range of your router (*i.e. x.x.x.50 - x.x.x.100*). This ensures that you'll never get an IP conflict when another device is turned on that accesses the network. If you are uncertain on how to set up a Static IP please consult a network specialist to ensure proper network configuration.

TWO WAYS TO LOAD MOVIES ONTO A FUSION SYSTEM:

There are two primary ways to load movies onto a Fusion Movie Server.

1. Loading a DVD or Blu-ray directly in the front of the server
2. Loading a DVD or Blu-ray through a PC on the home network

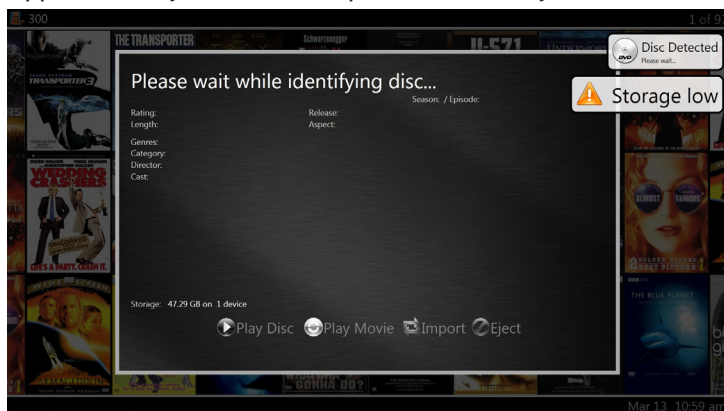


TechTip: DVDs and Blu-ray don't actually have any movie information or cover art on the discs themselves; they only have a numerical identification code. Fusion servers are able to catalog and provide this movie information by contacting the Fusion Online Database when the disc is loaded. Once loaded, the information is permanently saved and stored onto your system.

AN INTERNET CONNECTION IS REQUIRED TO LOAD MOVIES!

LOADING VIA THE FRONT TRAY ON THE SERVER:

This is probably the easiest method to load a DVD or Blu-ray onto the system. Simply insert the disc into the tray or slot on the front of the machine and allow it approximately a minute to pool and identify the disc.



Note: As discussed previously in this manual, to load a commercially encrypted disc, you'll have already needed to purchase AnyDVD HD software and registered it on our server. For home movies, this is not required.

When importing from the front tray you may physically scroll over and click [import] or if you do nothing, the disc will automatically begin to import after 30 seconds. This automatic import service for both DVD & Blu-ray is called EasyLoad™.



Once the movie has been identified in the Fusion Online Database you will be given the following options:

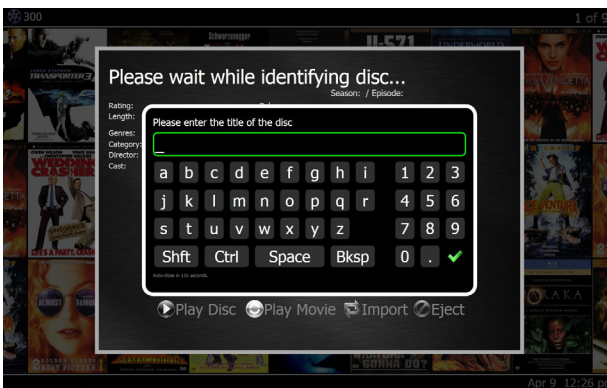
1. Play the physical disc
2. Import
3. Eject the disc

As mentioned earlier, if no command has been issued after 30 seconds, the system will automatically import the disc.



IF THE SYSTEM CANNOT FIND THE MOVIE INFORMATION:

Fusion's database system currently has over 120,000 cataloged titles and grows every day. If a movie cannot be found, a keyboard screen will pop up and allow you to put the title of the movie in yourself.



It is very important to type out the complete title of the movie exactly as it appears on the disc itself, you only get one opportunity to title the disc.

Note: It is normal for the system to take several minutes of searching before it gives up and allows you to put in the title manually.

Once you've entered the title information, the system will do a smart search to try and find the correct cover art and metadata information. It will then repeat the opportunity to either import manually or automatically after 30 seconds.

If you've loaded a disc and no cover art or metadata is found, a report is sent Fusion's headquarters. We have a team of people who correct the movie information in the database. A general rule of thumb is to give us 3-5 business days to correct the information. Then select the movie, navigate over to the [Advanced] tab (*if enabled from the setup menu*) and select the [Update Metadata] option. This will research our database and correct any movie information that is missing or inaccurate.



T TechTip: You also have the opportunity to correct the movie data yourself using the Fusion Media Manager software on a PC on your home network. Alternatively, you can email us at dvd_movie@fusionrd.com to alert us to the fact that you've loaded a title requiring metadata correction.

LOADING TIMES:

Loading times of movies can vary greatly. There are a number of factors to be taken into account. Obviously the size of the disc is the first consideration. (*A DVD averages around 6.5GB, a Blu-ray can be anywhere from 25GB-50GB.*) Scratches, fingerprints and manufacturing imperfections can also cause the loading process to take much longer as the system tries to correct for these deficiencies that may push the process over an hour.

Look for between 20-40 minutes as an average load time.

LOADING INTERNATIONAL TITLES:

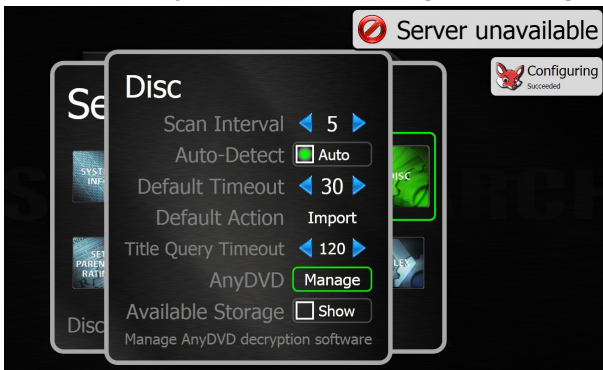
Both DVD & Blu-ray's have different region codes built into the discs. DVDs are numbered (1-6 are the primary regions - US is region 1, Europe region 2). Blu-ray are lettered (A,B,C - US is region A, Europe is region B). Some discs are listed as region 'free' or region 'all' and will play everywhere across the world. Discs should have their region marked somewhere on the dust jacket or on the disc itself. If it is not marked, it will probably be all regions.

Multiple regions can be imported and played back in a Fusion system, but care should be taken during the loading process to ensure that it is loaded correctly or the disc will not play back.

To change the region before importing a disc, select the main menu and navigate to [Set Up]/[Disc]/AnyDVD [Manage]. From this screen, highlight [Edit Regions] and click OK.



Simply change the appropriate region and click [Apply]. Now import the disc. (Be sure to set the system back to it's regular settings afterwards.)



LOADING VIA THE PC IMPORT UTILITY:

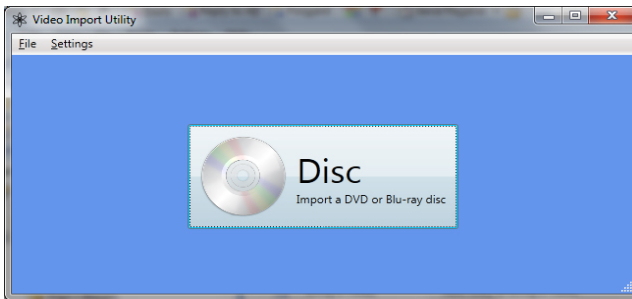
If a client would prefer to load discs via their own desktop computer somewhere on the home network, they can easily do that. The first step is to visit the password protected dealer intranet site at www.fusionrd.com and download the free import utility.



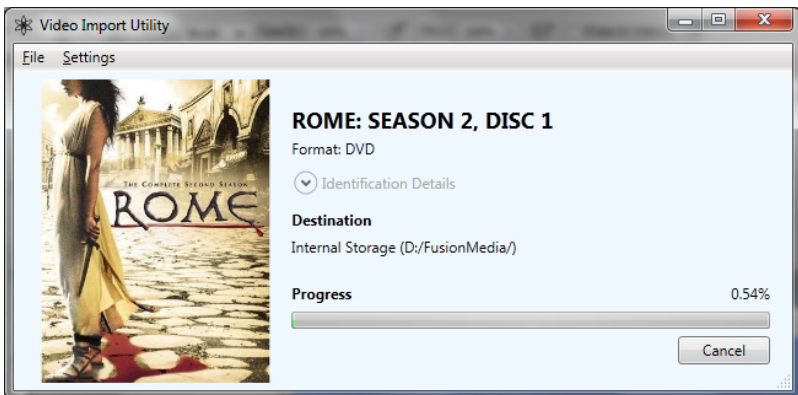
TechTip: The client will need to have AnyDVD HD loaded on their PC before they can import their movies. The same registration key should be valid for both the EPIC Movie server and their PC.

Before importing, please ensure that the importing computer and the Fusion server on the same hardwired Gigabit network!

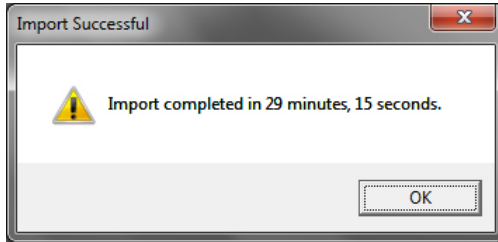
Make sure that AnyDVD HD is activated on the computer; insert a disc into the drive and when you open the import utility on the desktop, you'll this screen:



By clicking on the [Disc] button on the screen, it should find the disc information and immediately begin importing.



When the disc has finished importing, it will notify you that the Import has been completed.



IMPORTING A HOME MOVIE:

To import a home movie you will need to make sure that the files have been burned to a DVD format and that the DVD has been finalized during the creation process. Unfinalized media may not be able to be recognized correctly by Fusion Movie Servers. Please note that since created home movies will not have any form of identification on them it will require the use of the Fusion Movie Manager to customize the metadata.

THE FUSION GRAPHICAL USER INTERFACE (GUI):

The EPIC platform is Fusion's most advanced and powerful interface to-date. Years in the making, this system allows you to quickly and easily navigate your collection and find what you wish to watch. In this chapter we'll cover the basics of the EPIC interface. Refer to Chapter 2 for remote control functions. **Note:** *Many Fusion systems will be controlled via a universal-type remote control or third party home automation system. The navigation commands on these remotes may be slightly different.*



Fusion's selection box

By default, the movies will appear in alphabetical order. The first movie title appears in the selection box. **Note:** *The selection box identifies the movie you are currently set to control.*

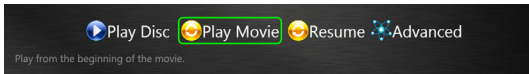
To move through your collection, simply navigate up, down, left and right using the appropriate arrow buttons on your remote control. You'll notice that the cover art 'flows' in the direction you are heading. When you find a movie you want to look at, press the [OK] button. You'll see the movie detail screen.



The movie detail screen gives you a lot of information about the selected movie including: Movie or TV rating, release date, length of movie, aspect ratio, genres the movie is classified, director, actors and a brief synopsis of the movie.

There are four commands available to you on most movies:

1. **Play Disc** - starts just as a DVD or Blu-ray player would. You will see any previews, disc announcements, etc before going to the main disc menu.
2. **Play Movie** - starts the at the beginning of the movie.
3. **Resume** - if the movie has been stopped in the past, this will allow you to resume the movie on that exact same spot.
4. **Advanced** (If enabled from the set up menu) - allows you to either update the movie metadata or delete the movie entirely from the system.



If you are simply looking for a movie to watch, that's all you need do, move to the movie, select it and press [Play Movie]. Your movie will start up within 3 seconds.



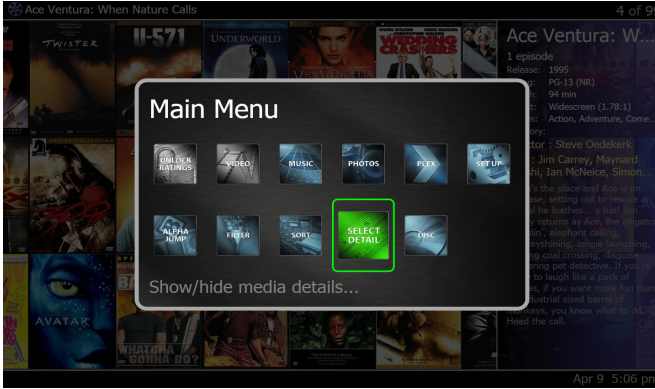
THE SIDEBAR:

When you select the movie detail screen you are locked on that one movie. If you'd like to get a little more information about the movies as you scroll through you can elect to enable the side bar.

The sidebar gives you most of the information that you see on the movie detail screen with the exception that it changes as you scroll through the movies. This is ideal if you're not sure what you want to watch but want more information as you peruse.

Note: You will not be able to start a movie from the sidebar, you will still need to press [OK] to bring up the movie.

To access the Sidebar, press the [Main Menu] button on the remote. Click [Select Detail] and hit the [Back] button to return to the interface. You'll now see the sidebar as you scroll through the movies.



To eliminate the Sidebar, simply reverse the process.



SEARCH, SORT, FILTER AND JUMP:

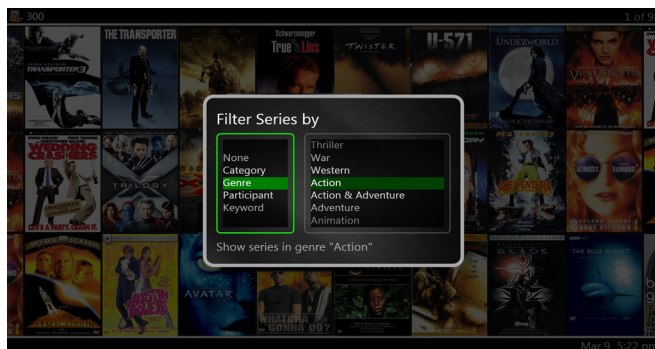
There are several ways you can choose to find movies rather than simply scrolling through your entire collection. Many of Fusion's users have collections in the thousands of titles and that can be cumbersome. The EPIC interface offers a robust number of options to sort, search and filter your collection.



Tech Tip: All of the search, sort, filter types of commands are accessible through the [Main menu]. Most of the filters however also have dedicated remote commands that can bring them up with one button push. If you are programming an IR remote or an IP control system, keep that in mind.

FILTERING FUNCTION:

Like the rest of the commands covered in this chapter, the easiest way to bring up the Filter function is to press the [Main Menu] button. From there you will be able to easily access all navigation functions. From the [Main Menu] select the [Filter] option. When you do, you will see the following screen:



Filter is exactly as you would imagine it, select something to filter your movie collection. For example if you have 1000 movies, it's a lot to peruse. By filtering by just the Action genre, you would now only see movies that are considering 'action' type movies. This will give you a much more manageable amount of movies to look at.



TechTip: To cancel any Sort or Filter function, simply press the [Back] or exit button.

FILTERING OPTIONS:

The two most common filtering options are Genre (filtering a type of movie) and Participant (filtering the results by a specific actor or director). Category has been left purposely blank. This is for users who want to use the Media Manager to create their own criteria for filtering. An example of this might be (Dad's Favorites) if someone tags each movie they like with that term, they will later be able to filter by it.

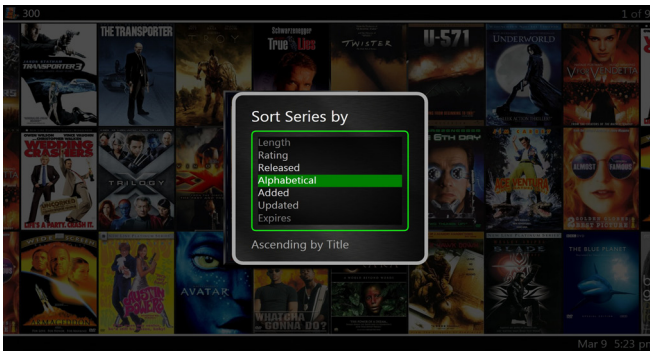
Finally, one of the most powerful filter options is the Keyword Search. When you select keyword, an on-screen keyboard will pop up and you can type in any phrase you'd like. The system will search the entire movie database for that phrase including things like titles, actors, directors, movie synopsis etc.



The result of a filter search by the name 'Jason'

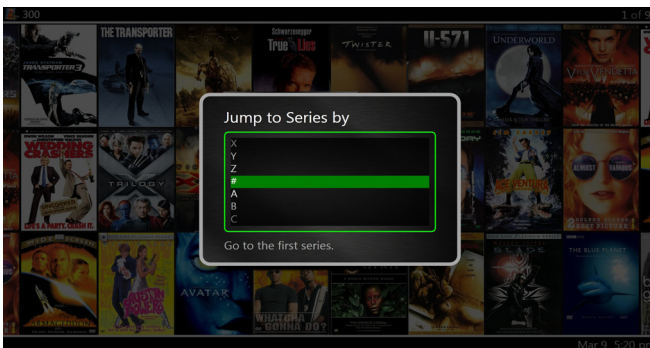
SORTING FUNCTION:

Sort does not filter out movies, it simply rearranges all the movies into a different order. Sorting has many criteria you may choose from including: alphabetical order, the date the movie was imported into the system, the date the movie was released, the length of the movie and the rating of the movie or TV series.



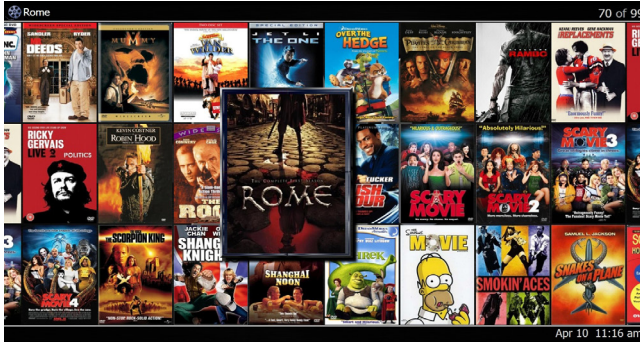
ALPHA JUMP:

Alpha Jump simply takes you to the first movie title in the letter you select.



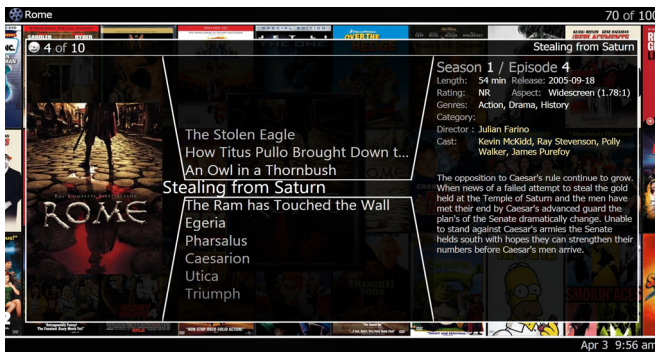
NAVIGATING TV SERIES:

An exciting new tool of the EPIC platform is the new ‘Series Mode’. This enables a user to have all their favorite episodes of a series available in one location rather than the traditional method of having one entry for every DVD or Blu-ray disc and needing to navigate to a specific episode once you have selected the disc to play.



Only one entry for a TV series instead of one per disc

This new series option benefits in many ways, including the fact that it keeps your cover art interface from being flooded with the same covers. With the series option, you would have only one cover art entry and when you select that cover, each episode would appear for you to select and watch directly, see the graphic below.



TechTip: Because there isn't clear information on what episodes are on specific releases of individual series discs, to begin with the only series that will have this feature are series discs that Fusion has mapped in their facility. As time passes, this will become more and more prevalent. If you'd like to have your series added to the database, you can contact us and arrange to send your discs in and we'd be happy to add them. Contact us at dvd_movie@fusionrd.com to send in your discs.

TV EPISODE START POINTS:

TV Series start points cannot be created without the physical disc to mark the beginning of each episode. Fusion's database service has preset these start points on many hundreds of TV series, but there will be many more without them, at least as the service gets started.

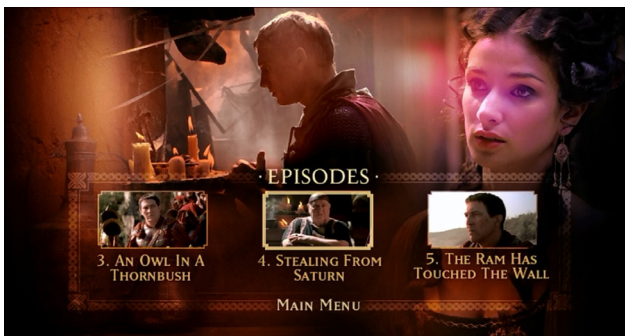
Fortunately, it's extremely fast and simple for the user to set their own beginning points of each episode to create a series. To determine if your series disc can be mapped with start points, press the [OK] button to bring up the detail screen. If it looks like the image of the 'Rome' series on the previous page, you will be able to set start points. If it looks like a normal movie without episodes pre-listed you would need to send that disc in to Fusion to have us add it to the database.

CREATING THE TV EPISODE START POINTS:

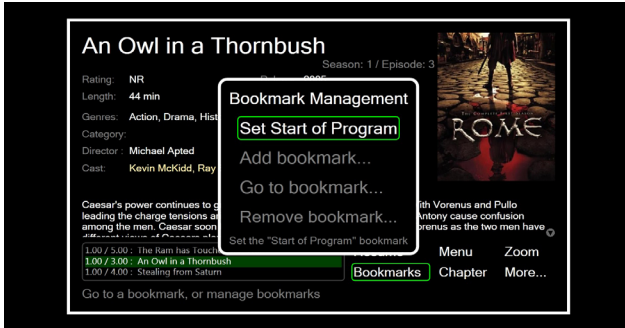
Select the episode you wish to set the start point for and press the [OK] button. You will see a screen directing you to 'Play Disc'.



Play the disc and navigate to the disc menu. From there you will select the episode on the disc itself and play it.



As soon as that episode begins playing, hit the [Pause] button. Now select [Bookmarks] from the options on the pause menu and you'll see the screen below.

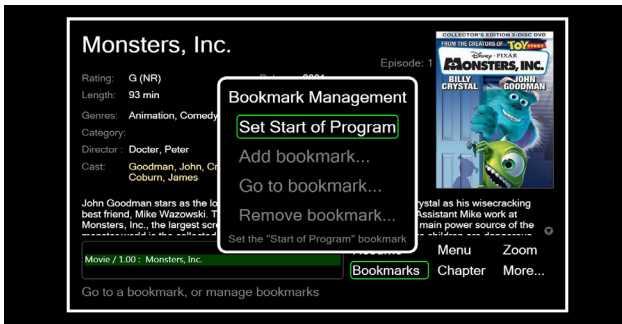


Select the “Start Episode” option and that start point will be saved for that episode. Repeat for each of the other episodes of the series. It should only take you a few moments to set each episode.

CREATING START POINTS FOR MOVIES:

The EPIC platform has been designed to start each movie at the beginning of the featured presentation. On the rare occasion, you will find a movie that forces you to start from the beginning of the disc. To set the beginning of the movie is just as easy as setting an episode start point.

Simply play the movie from the disc menu screen and as soon as it starts up, hit the [Pause] button. Now select the [Set Start of Program] option and your movie will always start from that point.



ON-SCREEN DISPLAY FOR MOVIES:

Once you are playing movies, you may wish to look at various information on the disc while the movie is playing. To do this press the [DVD Menu] button on the original Fusion remote.



This will enable you to see things like the time left on the disc, what audio you are using, the time, chapter, etc.



PAUSING AND PICKING UP IN ANOTHER ZONE:

The EPIC interface remembers the last point at which you stopped every movie. Stop a movie half-way through and you are able to pick it up at that exact same spot later on that week. If you have more than one zone, you may wish to stop it in one location and pick it up in another. To do that simply hit [Stop]. When you get to the other location, select that movie from the GUI and select the [Resume] option.

It will ask you which zone you'd like to start the movie in.

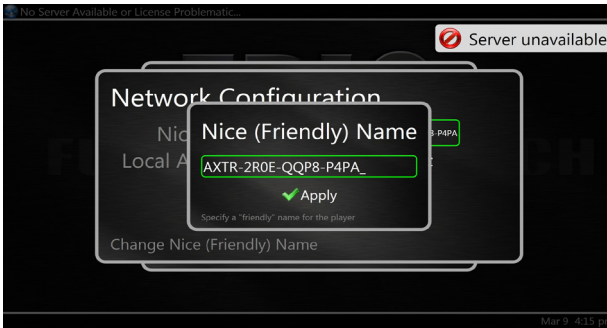
Note: Fusion zones are designated by their serial number unless you give them a “Friendly Name”.



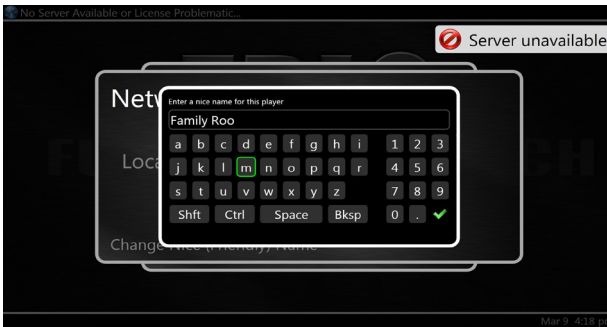
SETTING A FRIENDLY NAME FOR EACH ZONE:

To make the best use of the [Resume] feature, you'll want to assign each Fusion zone a friendly name. (For example, name each zone where they are located, Family Room, Theater, MBR, etc.)

To rename a zone, simply go to [Menu]/[Setup]/[Network] and select [Friendly Name]. You should see this screen:



Select the serial number you wish to change and you'll see an on-screen keyboard come up. Type in the name you'd like to use for that zone and hit the green check mark button.



Once you have completed renaming the zones you can simply exit the menus and return to the GUI interface.

SETTING PARENTAL RATINGS ON THE SYSTEM:

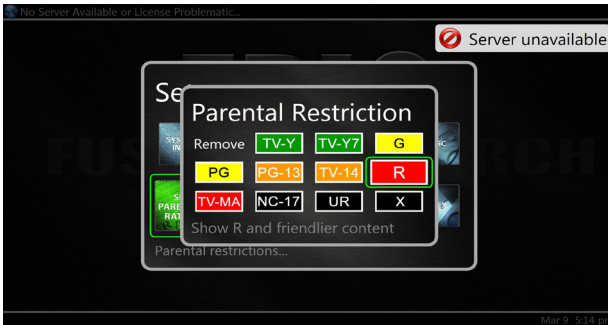
The final thing you may wish to customize on your Fusion Movie Server, is which movies you wish to show at all times. The most typical use of this will be for parents who do not wish their children to have access to the higher rated films when they are left alone.

[Parental Control] will hide movies above a set level from the interface. A password, will release them for a short period of time when a parent wishes to peruse the entire collection.

To set the Parental Rating, go to [Menu]/[Setup]/[Set Parental Rating]. Here you will be able to set your own password that will be easy for you to remember and apply the level of restriction on the content showing.



TechTip: The parental ratings are set by individual zones. So if you've got a multi-zone Fusion system, you'll want to set up each server and player individually.



TEMPORARILY RELEASING PARENTAL RATING:

To permanently change the parental rating, you'll need to repeat the process just described.

To temporarily allow the viewing of all movies on the system, go to [Menu]/ [Unlock Rating]. Until there is a lock applied, the option for navigating to [Unlock Rating] will be greyed out.

Once you are on the [Unlock Rating] screen you will be asked to enter the password you had previously assigned during the set up phase.



Enter that password and you can choose how long you would like the restriction on the movies to be lifted.

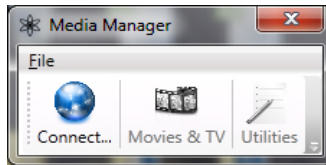


THE FUSION MOVIE MANAGER APPLICATION:

Fusion provides a free media management utility for PCs. The manager is a useful tool for adding information to your own home movies or to add custom information to your regular movie collection.

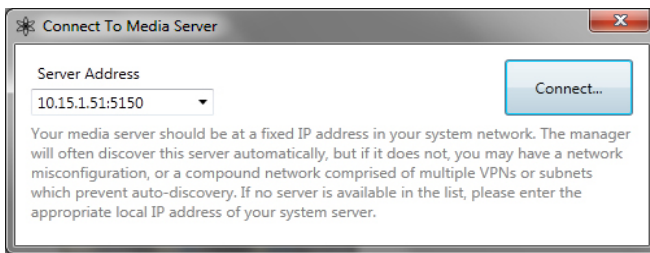
The Fusion Media Manager is available to download for free from the Fusion Research website [www.fusionrd.com] under [Getting Support]

Note: *The Fusion Media Manager and Import Utility applications require Microsoft's .Net Framework to be downloaded on your computer. .Net Framework is a free application that you can get from Microsoft's website.*



Download the utility onto a PC that is on the same network as the Fusion server and you will be able to manage your movie collections. Open the utility and the first step will be to connect to the server.

Click on connect and the utility will attempt to find the Fusion server on the network. If you see an IP address, click connect. If no IP address is shown, type in the static IP of the server.



TechTip: You can find the server's IP address in the [Main Menu]/[Setup Menu]/[Network] on the EPIC interface. You should always set a static IP for your Fusion server.

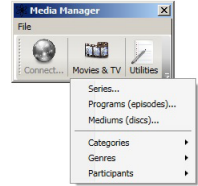
Once you are connected to the server, you may select the [Movies & TV] tab or the [Utilities] tab. The Utilities tab allows you to look at the remaining storage you have left.

Note: *An average DVD is approximately 6.5GB in size, whereas a Blu-ray can be anywhere from 25GB-50GB in size.*

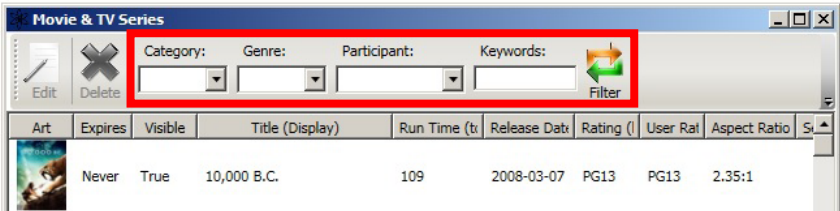
ACCESSING MOVIE INFORMATION:

Fusion's EasyLoad™ service automatically finds the cover art of a movie and all its essential metadata. Occasionally a movie will be too new or too esoteric to find all the correct information. You can email Fusion (dvd_movie@fusionrd.com) and let us know that specific information on a disc is not correct and we can go right in and correct it on the main Fusion database. You may also choose to correct that information yourself. It is easily done on a PC on the network using the Media Manager.

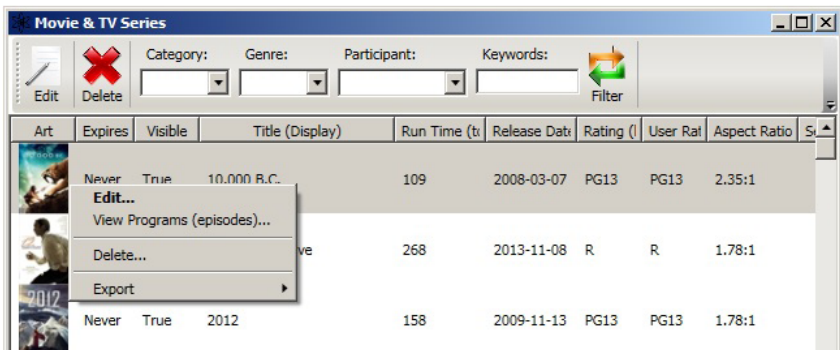
To begin modifying the information select [Movies & TV] from the Media Manager and then choose [Series...]. When you modify the information within the [Series...] it will change the cover art and information displayed in the EPIC interface for selecting a title.



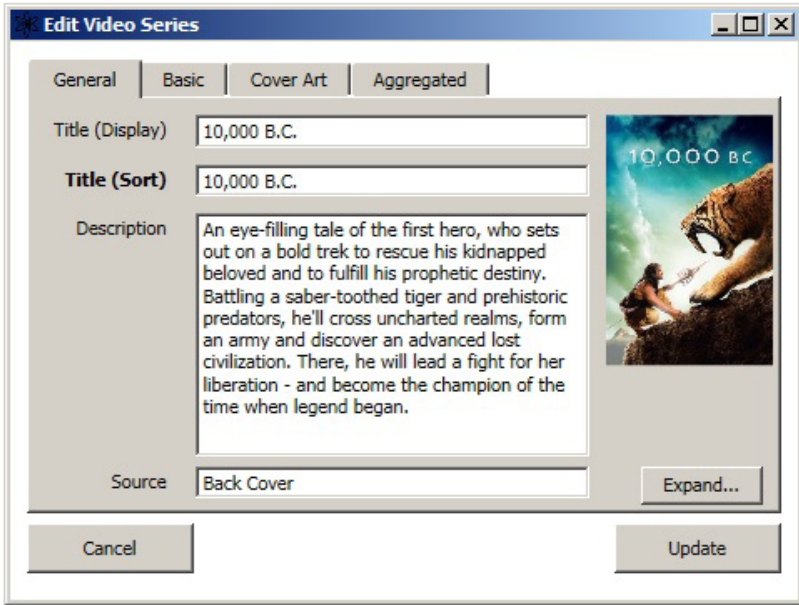
If your collection is large enough to give you trouble finding the movie you wish to edit, you can use one of several filters to narrow down the collection, similarly to the main GUI on the TV, you can filter results by Category, Genre, Actor or Director or look up movies with a specific keyword in them.



Once you have located the title that you want to modify the information of [Right-Click] on the entry to open the edit options menu.



The edit options menu provides you with the options to [Edit...], [View Programs (Episodes)...], [Delete...] and [Export]. Selecting [Edit...] will open the metadata for the selected title's [Series...] information.



In this window you are able to modify the [General] information about the selected media. You will be able to modify the Title that is displayed in the EPIC interface, the way the title is displayed for Sorting, and add a brief Description about the media content. You can also change the cover art displayed on the EPIC interface by selecting the [Cover Art] tab.

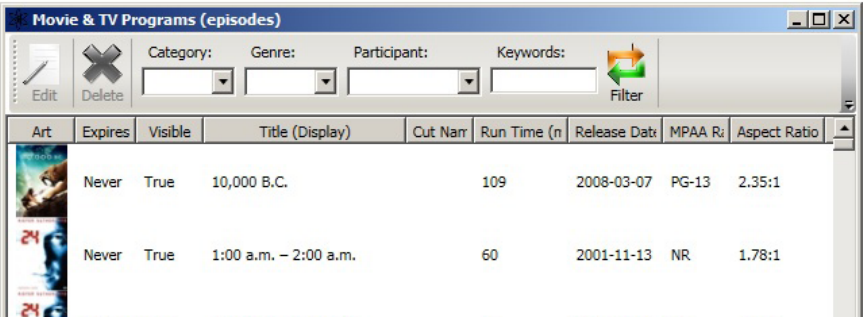


Tech Tip: When trying to find a image to use for the cover art there are a couple things to remember. For best results a image size of 350x500 pixels is recommended. Also the image used must be in JPEG format.

After you have made your changes to the information click the [Update] button in the bottom right corner to save the new information and close the edit options menu.

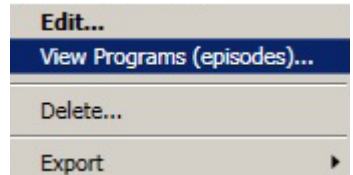
Now that you have changed the [Series...] information for your media you will want to change the [Programs (Episodes)] so that the information that appears once you have selected a title appears correct as well.

There are two ways to access the program information using the Media Manager. The first method is to select [Movies & TV] and then [Programs (Episodes)] exactly like you selected [Series...] from the Media Manager Menu. This will open a list of all the programs on the Fusion Movie Server.

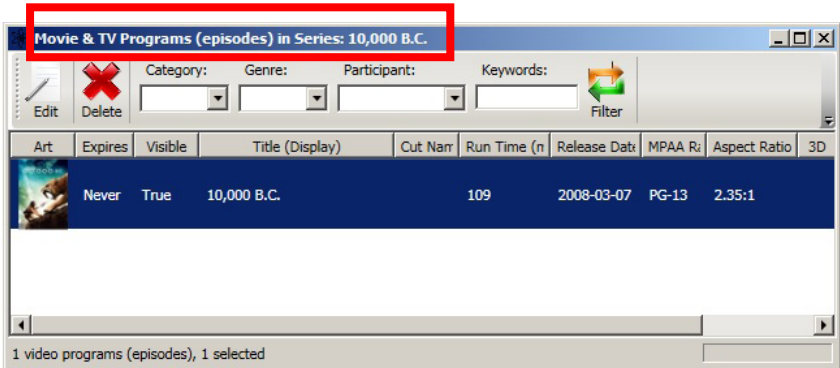


Using this method you have all the same search, sort and filter options that were available when selecting a title in the [Series...] menu to help locate a specific program.

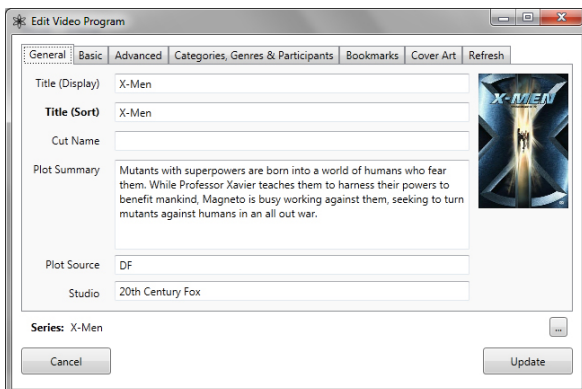
The other method to access a specific program or programs is to choose [Movies & TV] and then [Series...] from the main Media Manager Menu as you previously did. You will again select the title you want to modify and [Right-Click] to open the edit options menu. Select [View Programs (episodes)...] to open a new window that contains only the programs listed within that specific [Series...] title.



As you can see below the programs shown are only for the specific series entry.



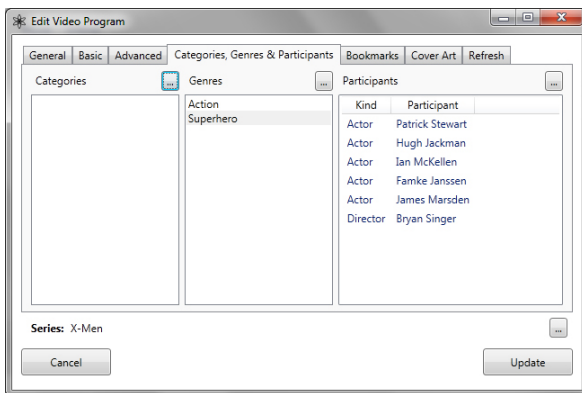
NOTE: Regardless of the method you choose to use to access the program or programs the editing functions available are identical.



The first data points you can change is the Title and the Plot Summary. You'll notice that there are two 'Titles' available, the first is how the title shows up on the screen and the second would be how it's sorted. For example, you may have 'The Simpsons Movie' as the listed title, yet for sorting purposes you would want it sorted by simply "Simpsons Movie" under "S".

EDITING GENRES AND PARTICIPANTS FOR A SPECIFIC MOVIE:

To edit the Genre's a movie is listed under or the actors or directors, click the following tab. To add a new category, genre or participant to this particular movie, click on the box with "..." symbol. To edit an existing value, just right-click on it.

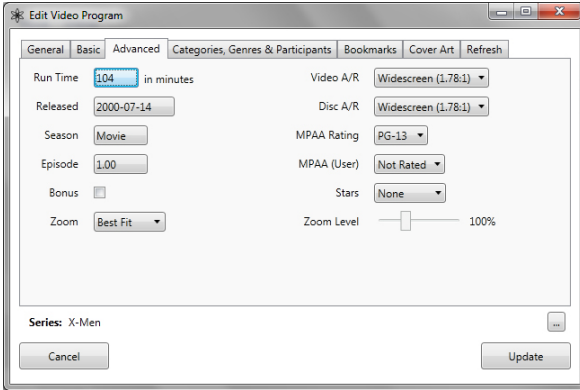


COVER ART TAB:

To edit a movie's cover art, click on the "Cover Art" tab and right click on the cover and use the "Select" drop down menu. You'll be prompted to navigate your computer and select an appropriate JPG, you've pre-selected for the cover art. 350 x 500 pixels is an ideal size for cover art.

ADVANCED TAB:

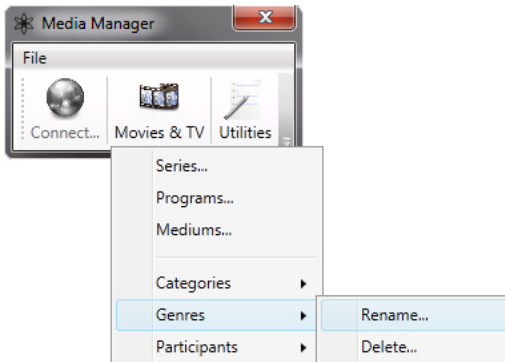
The “Advanced” tab has several items you may wish to customize. The most common one is the MPAA (User) rating. Whenever the Fusion system is sorting or filtering movies by rating, it will use the MPAA (User) rating. This gives you complete control of what you would like your children to watch. For example, a PG-13 film might be deemed unsuitable for a child



to watch so the parent can upgrade the rating to “R”, thus showing it amongst higher rated films and if a Parental Filter is used, this movie might not show up at all on the screen.

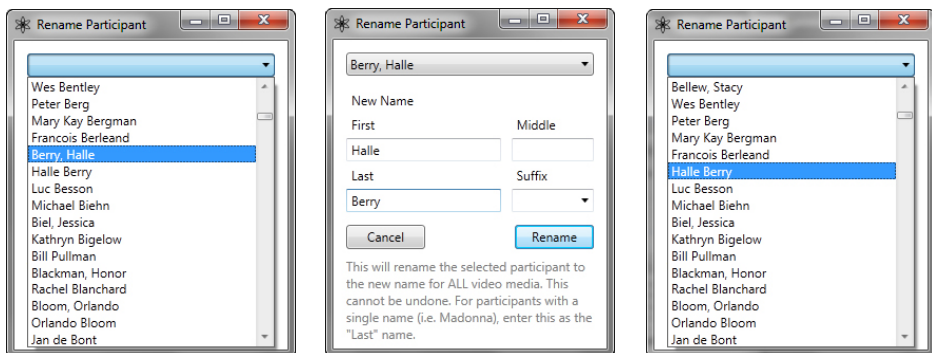
EDITING GENERAL GENRES AND PARTICIPANTS:

Another common change to the system you may wish to consider is correcting the Genres available to the movies. It is very simple to change categories, genres or participants by going to them on the dropdown menu.



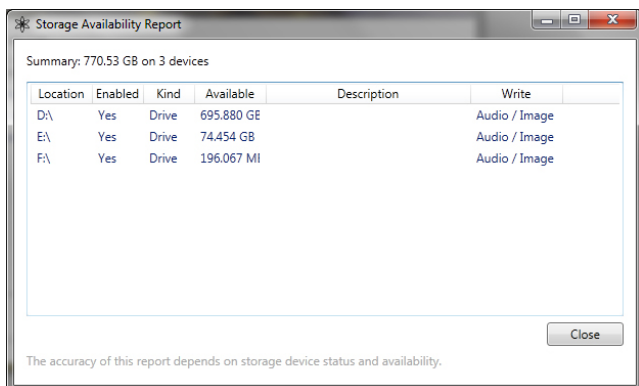
Another common change to the system you may wish to consider is correcting an Actor or Director's name. An example of this would be if the system has pulled the Actor's name last name, first as well as first name, last. (Note: The default is first name, last name).

To correct that, click on Movies & TV and select Participants from the drop down menu. You'll see a list similar to the one on the left. Select the name you wish to change and the middle screen will pop up. Fill in the appropriate information and the screen on the right will then show the correct change.



UTILITIES BUTTON:

By clicking on the “Utilities” button on the Media Manager, you can select a storage option. This gives you an up to the minute report on exactly how much storage you have available on all storage servers on the system. This is especially useful when you have a Fusion Storage License and third-party NAS connected for large collections.



ADDING ZONE PLAYERS TO A FUSION SYSTEM:

All Fusion servers are able to expand the number of independent movie streams through the use of zone players. The number of zone players you are able to attach varies depending on the model of server so be sure to check the system specifications when choosing the correct server for a job.



Additional zone players can easily be added to a system by connecting them via Cat-5 Ethernet cable to the same network (**Note: Must be gigabit**) as your server. Plug in the power adaptor and the HDMI cable as well and power up the player.

The player will automatically assign itself an IP address and pull the movie content from the server. You will now have another completely independent stream from the server.



TechTip: Similar to the Fusion server, we highly recommend setting a static IP for your player, including all gateway and DNS information. Refer to this manual for setting a static IP.

The setup of additional zone players is identical to setting up the main server. Refer to this manual regarding set up questions of the player.

ADDING ADDITIONAL STORAGE CAPACITY:

Fusion has a unique way of allowing additional storage capacity to be added to a system. We allow you to add high-quality third-party Network Attached Storage (NAS) to be added to the system.

A license must be purchased from Fusion in order to allow these NAS to work with a system. If you need to purchase a NAS, contact Fusion at (925) 217-1233 or email info@fusionrd.com.

WHAT IS NETWORK ATTACHED STORAGE:

NAS servers are devices that use multiple hard drives to share information across a network, these drives are often configured in a Redundant Array of Independent Disks (RAID) that allows one or more drives to be used as an automatic backup should another drive start to fail. NAS can come in either pedestal or rack-mounted configurations. Care should be taken to select quality hard drives that are specially designed for NAS systems.

Note: Fusion systems should always be installed on a Gigabit network.



A NetGear Pedestal ReadyNAS

WHAT STORAGE SHOULD YOU USE?:

Not all NAS servers are equal. Fusion recommends high quality NAS servers from companies like NetGear and QNAP. Some NAS are designed simply to back up data. Faster, high quality NAS are designed to both push and retrieve information. Always check with Fusion about a specific NAS before you purchase.



TechTip: Fusion can sell and configure a NAS for you at today's market prices. This makes it simple for you to obtain and you won't need to worry about setting up a RAID. To get a quote on a NAS, call or email at the information mentioned above.

WARRANTY TERMS OF COVERAGE:

Each Fusion branded system sold comes with a 13-month limited warranty. This warranty provides no-charge coverage under normal product usage, for a period of thirteen months from the date the product is shipped from the factory, the warranty period does not commence when the system is installed. This warranty program provides the following key features and benefits:

- Thirteen (13) month service parts and labor.
- Five (5) day turnaround time on all standard in-warranty repairs. No charges to the customer other than in-bound shipping charges, which are determined by the shipping method. All return shipments will be via Standard Ground Transportation from CA
- Thirteen (13) months of regular hour telephone support (8AM-5PM PST), Mon-Fri.
- 24-hour email response from the Fusion Support Website during normal hours.
- Software maintenance updates provided via an Internet connection.
- Access to 24-hour music and movie databases and services providing access to thousands of CD and DVD titles and associated information.

WHAT IS NOT COVERED UNDER WARRANTY:

A number of items must remain intact in order for Fusion to verify and validate this warranty. Additionally, there are conditions, which violate Fusion's warranty program. These include:

- Equipment which shall have been subjected to damage, deterioration or malfunction resulting from (a) accident, negligence, misuse, abuse, improper installation or operation or failure to follow instructions contained in the User Manual, (b) improper environmental conditions, such as inefficient cooling and air flow or fluctuating power conditions (such as "brown" or "black" outs), (c) shipment of the product (such claims must be presented to the carrier), (d) repair or attempted repair by anyone other than Fusion or an authorized Fusion Customer Service Center, (e) lightning, tornado, hurricanes, floods, or other events beyond the manufacturer's control (Acts of God).
- Any product, on which the serial numbers has been defaced, modified or removed physically or electronically, will not be covered by a Fusion warranty.
- Any type of unauthorized repair made to the system resulting in the damage to the product will not be covered under this warranty, or ANY installation of unauthorized software not provided by Fusion.
- Damage caused to the product as a result of improper shipping or installation.
- Damage caused to the product as a result of improper installation of third party peripherals or products, or incorrect connections to peripheral or products.
- Any damage to recordings or recording tapes or discs or any other media
- The cost of parts or labor which would be otherwise provided without charge under this warranty, obtained from any source other than Fusion.
- The loss of any data, content, time, or commercial loss, whether real, incidental or consequential.
- Equipment not manufactured by Fusion. With respect to equipment sold by, but not manufactured by Fusion, the warranty obligation of Fusion shall in all respects conform and be limited to the warranty extended by its supplier.
- The foregoing warranties do not cover reimbursement for labor, transportation, removal installation or other expenses, which may be incurred in connection with repair or replacement of equipment as provided herein, except for ground shipping charges within the USA to return repaired or replacement units to the owner.

- Except as may be expressly provided and authorized in writing by Fusion, Fusion shall not be subject to any other obligations or liabilities whatsoever with respect to equipment manufactured by Fusion or services rendered by Fusion. The foregoing warranties are exclusive and in lieu of all other express and implied warranties except warranties of title, including but not limited to warranties of merchantability and fitness for a particular purpose.

HOW TO RETURN A PRODUCT FOR REPAIR:

You must contact Fusion's support group at (925) 217-1233 to receive a Return Material Authorization (RMA) number. This number is to be attached to the outside of the shipping carton. The technical support person will give additional instructions. Please be sure to use the original packaging when possible, or provide adequate packaging. It is the responsibility of the customer to insure the product arrives in secure order. Fusion highly recommends insuring the package for an adequate amount to cover the cost of the unit. It will be the customer's responsibility to collect the insurance from any claim for damage in shipping.

OUT OF WARRANTY REPAIR:

Fusion provides out of warranty repair service on a flat-rate basis if the system fails the system evaluation test. Minimum charges will apply to evaluate the system. Technical support will provide information on this service at the time of the call.