

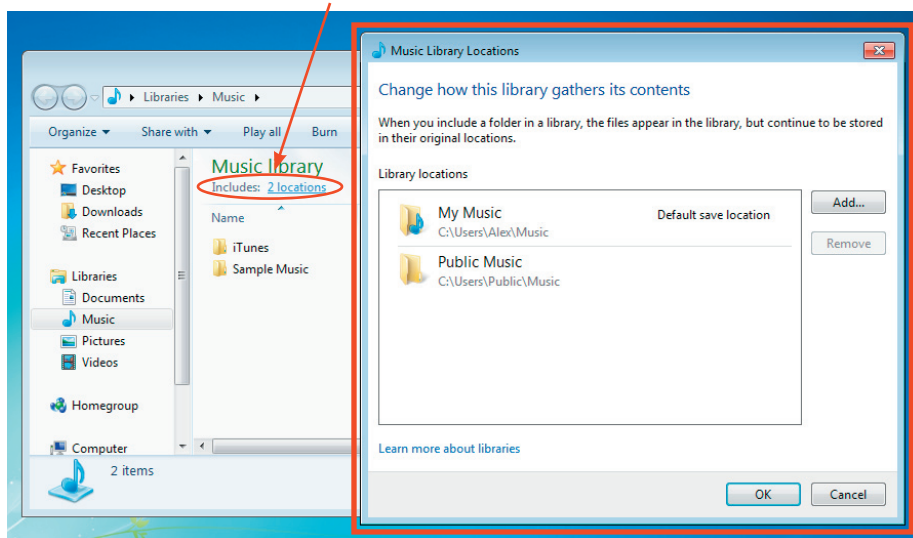
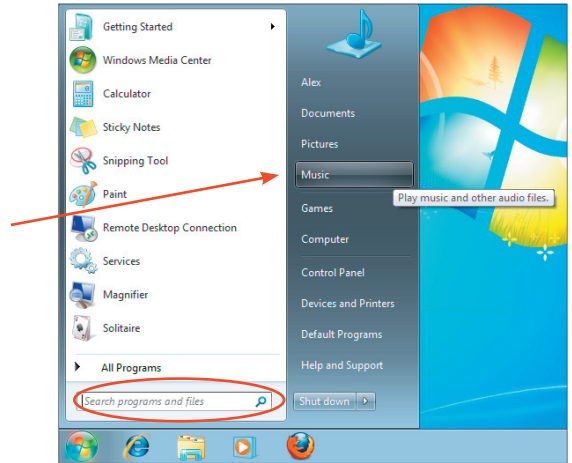
SHARING NETWORKED MUSIC TO AN OVATION MUSIC STREAMER On a Windows 7 Machine

STEP 1: LOCATE CLIENT'S MUSIC

If you already know where the music files are, you can skip this step, but if you do not, here are some things you can do to find them.

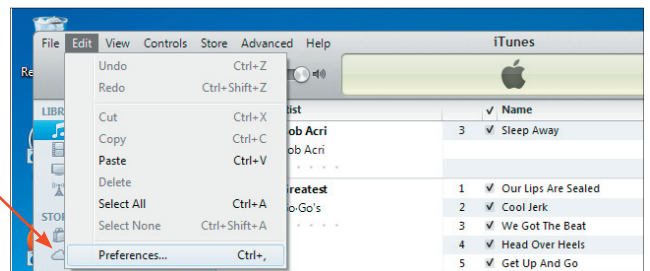
MUSIC IN WINDOWS

1. Click the "Start" button in the lower left corner of the desktop and choose [Music] from the list on the right of the Start Menu. If you don't see Music on the right, you can type "music" (without the quotes) into the "find" box at the bottom of the Start Menu and hit enter.
2. Once the Music folder appears, click the [Includes: ? locations] link. This will open a dialog box that indicates the exact location of the folders where the music library knows music files are located.



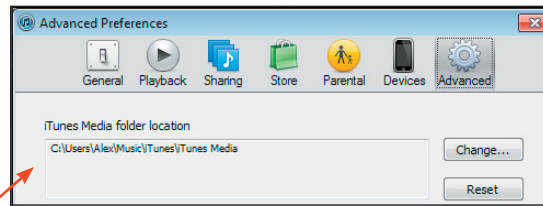
MUSIC IN iTunes

1. Open iTunes and select Preferences from the Edit menu.



SHARING NETWORKED MUSIC TO AN OVATION MUSIC STREAMER

2. Click on the Advanced button on the top of the Preferences window.



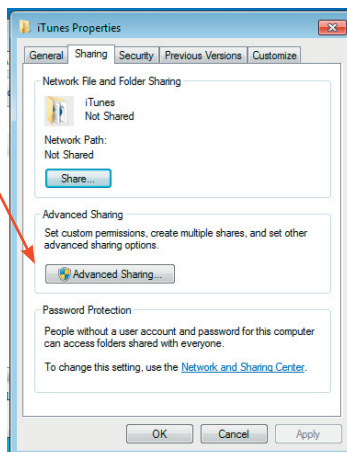
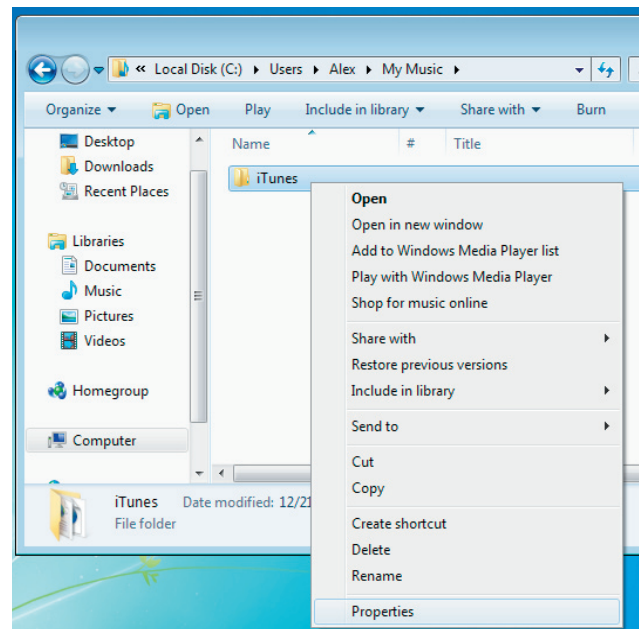
3. The [iTunes Media folder location] indicates the locations of your iTunes music.

! **Note:** DRM protected iTunes files (ending in the “m4p” extension) cannot be played.

STEP 2: SHARING A FOLDER

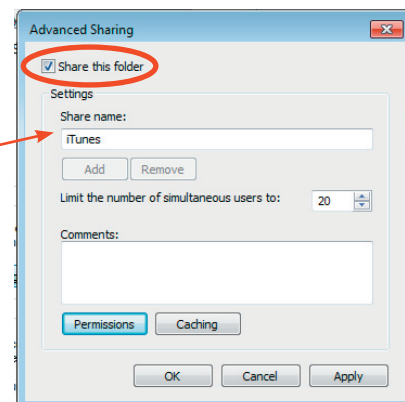
1. Now that you know where the music is, navigate to the folder you wish to share and right-click on the folder you want to share and choose [Properties] from the popup menu. This will open a “Properties” dialog box for the folder.

2. Click the Sharing tab at the top of the Properties dialog box to look at the sharing settings and click the Advanced Sharing button.



3. Check the “Share this folder” checkbox to enable the settings so you can configure them.

4. You don’t need to change [share name] but you can replace it with something that is more meaningful to you. This is the name of the [shared folder] you will use when configuring your OMS.

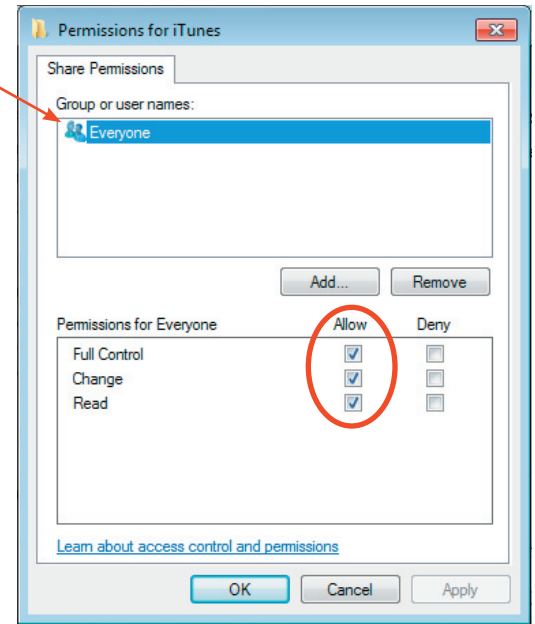
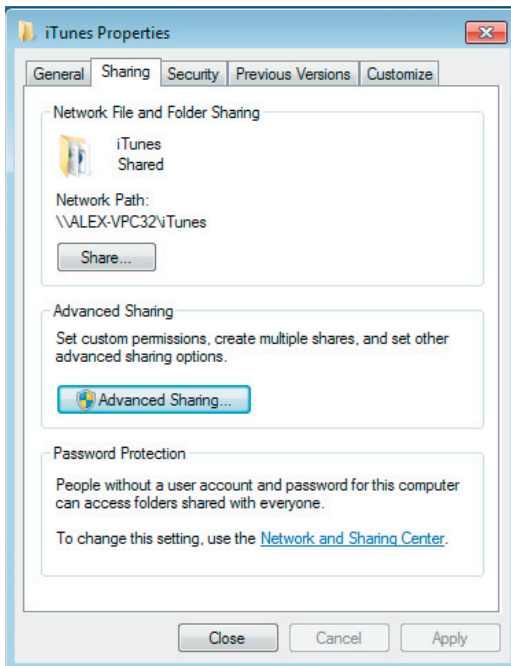


SHARING NETWORKED MUSIC TO AN OVATION MUSIC STREAMER

5. Click the Permissions button to specify who can access this shared folder and how. Make sure [Everyone] is listed as a user at the top, and select it. Then check all of the permissions boxes below for the [everyone] user. [Everyone] must have [Full Control] of this shared folder.

6. Close the folders.

You can now click OK on the Permissions dialog window. Then click OK on the Advanced Sharing dialog window. Then click Close on the folder's Properties dialog window.

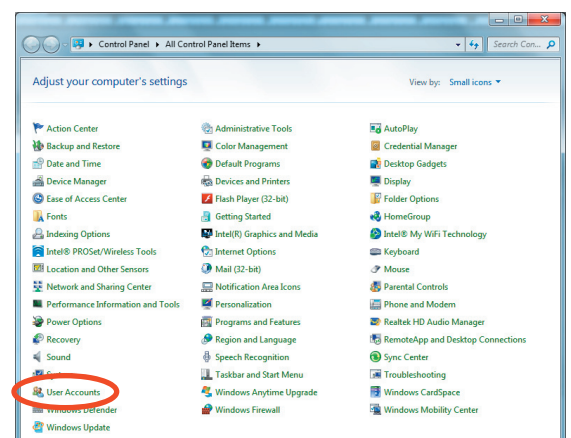


7. Your folder is now shared and available on the network.

NOTE: COMPUTER USER NAME & PASSWORD

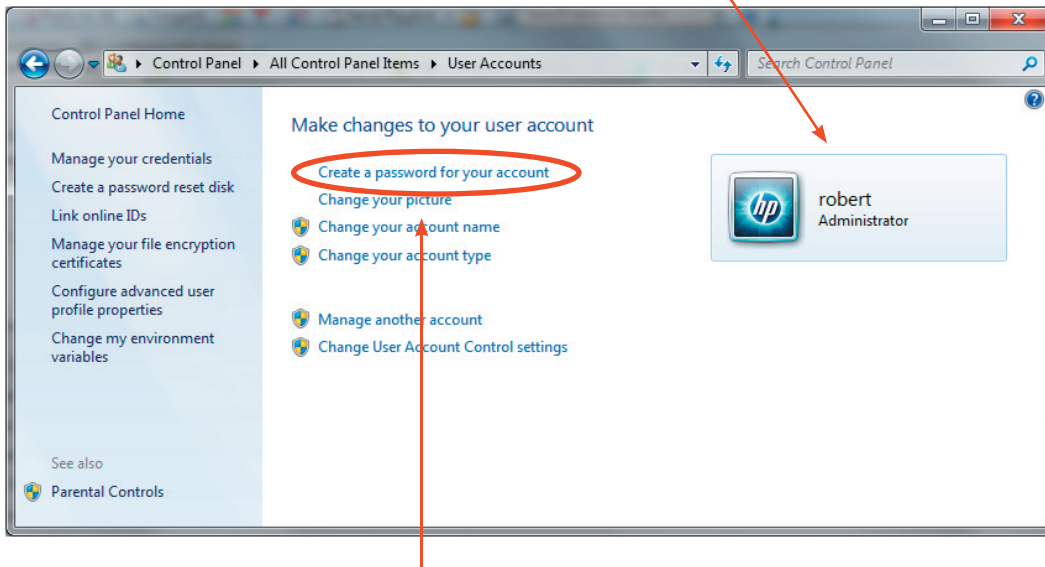
In addition to the steps above, to share a folder with an Ovation Music Streamer, you'll also need to assign both a user name and password to the computer or NAS that has the folder you wish to share (if it does not already have one). The user name is simply the name the computer was given when it was initially setup.

1. To see what that name is, click on the [Start] button at the bottom left side of the screen and select [Control Panel/User Accounts]

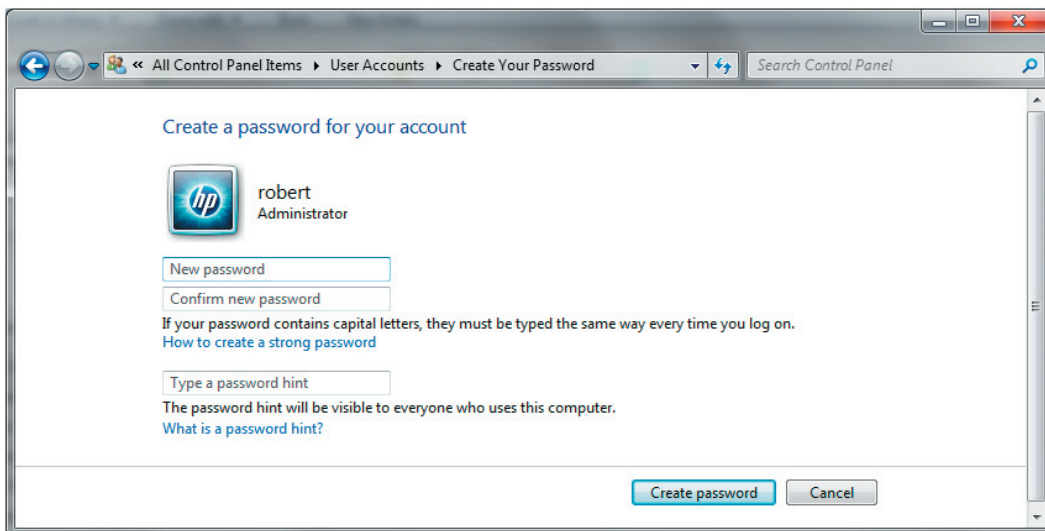


SHARING NETWORKED MUSIC TO AN OVATION MUSIC STREAMER

2. You'll see the name (or names) of the current accounts on the computer. Make sure that you note down the account the user has music in if there is more then one account.



3. Next you'll want to create a password for this account (if it doesn't already have one, if it does simply make note of it for inputting later into the OMS.) Click on [Create a password for your account].



4. Enter a password and confirm as well as include a hint to remember it in the future. Click create password and again, make note of the user name and password for adding to the OMS later.